

# Jacksonville District

SAME Industry Forum

LTC Clint Barker

Deputy District Commander

USACE Jacksonville District



INTERAGENCY & INTERNATIONAL SERVICES



REGULATORY



ECOSYSTEM RESTORATION



NAVIGATION



FLOOD DAMAGE REDUCTION



COASTAL DAMAGE REDUCTION



®



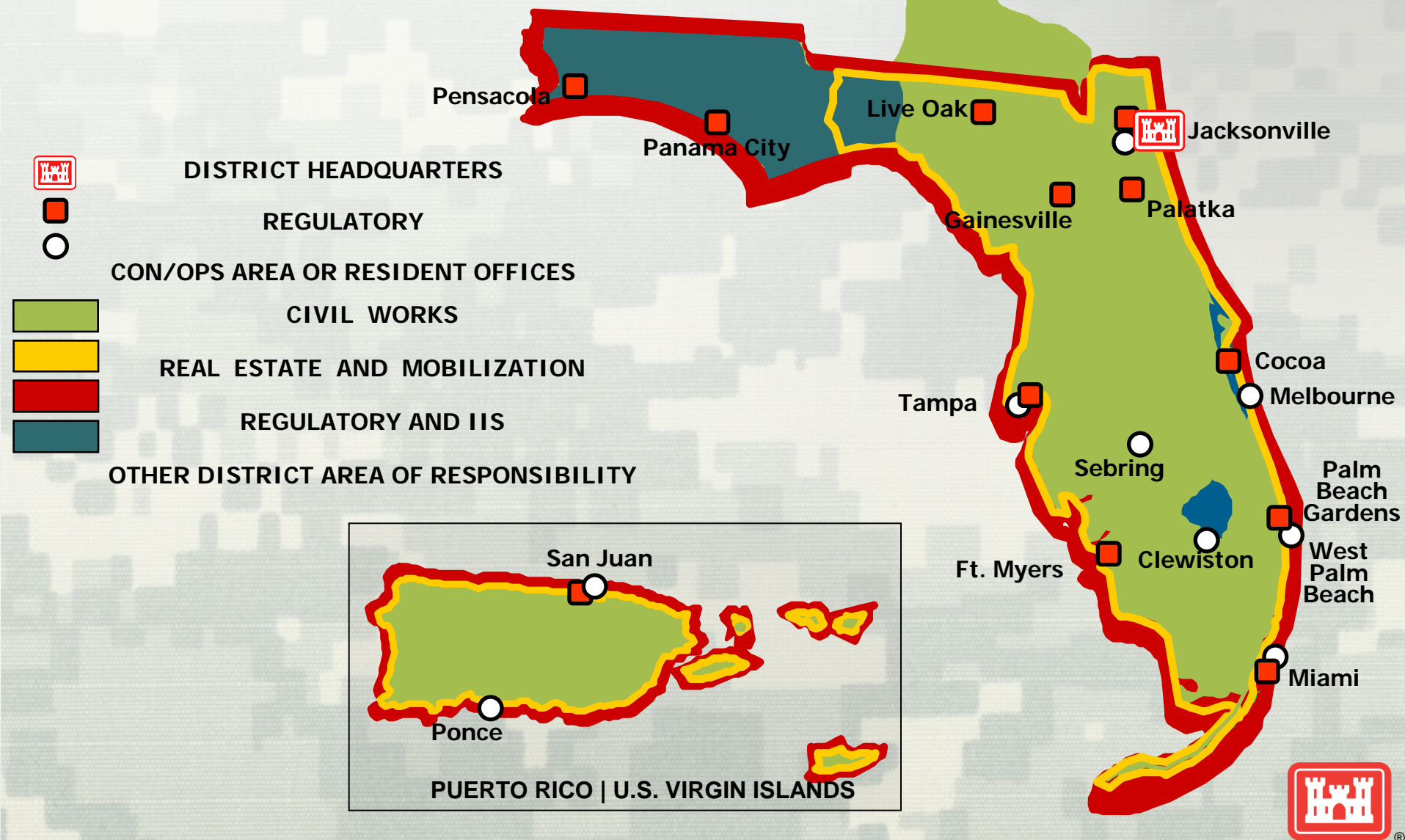
# Jacksonville District

Missions  
Customers  
Programs  
Sample projects  
Opportunities





# District Offices





# **Program Responsibilities**

- 17 Deep Draft/20 Shallow Draft Ports
- 900 Miles of inland waterway & 6 locks
- Largest shore protection program in the US
- Largest Regulatory Program in the US
- Largest Ecosystem Restoration in the US
- 2nd Largest Levee Inventory in the US
- 700 Formerly Used Defense Sites in Florida
- Florida and the Caribbean Basin



# Key Regional Sponsors and Stakeholders

- Local Water Management Districts
- Puerto Rico and U.S. Virgin Islands
- Port Authorities
- Tribal Nations
- Other Federal Agencies





# FY12 Program Budgets



**NAVIGATION**  
FY12 \$44M



**SHORE PROTECTION**  
FY12 \$17M



**ECOSYSTEM RESTORATION**  
FY12 \$168M



**REGULATORY**  
FY12 \$16M



**INTERAGENCY AND  
INTERNATIONAL SERVICES**  
FY 12 \$112M



**EMERGENCY  
MANAGEMENT**  
FY 12 \$543,700



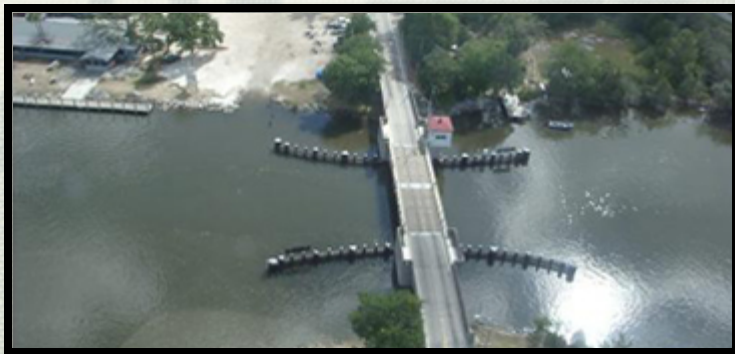
**FLOOD DAMAGE  
REDUCTION**  
FY12 \$152M





# What We Build

- Shore Protection
- Beach Renourishment
- Environmental Restoration
- Water Treatment Facilities
- Levees & Waterways
- Channels & Canals
- Water Control Structures
- Pump Stations
- Dams
- Buildings and Structures
- Ordnance Removal
- Aquatic Plant Control





# Interagency and International Services (IIS)



**Sapp Battery Superfund**

Cottdale, FL | U.S. EPA



**Aguadilla Service Processing Center**

PR | U.S. Department of Homeland Security



**Escambia Wood Superfund**

Pensacola, FL | U.S. EPA



**U.S. Army Reserve Center**

Fort Allen, PR | U.S. Army Reserve



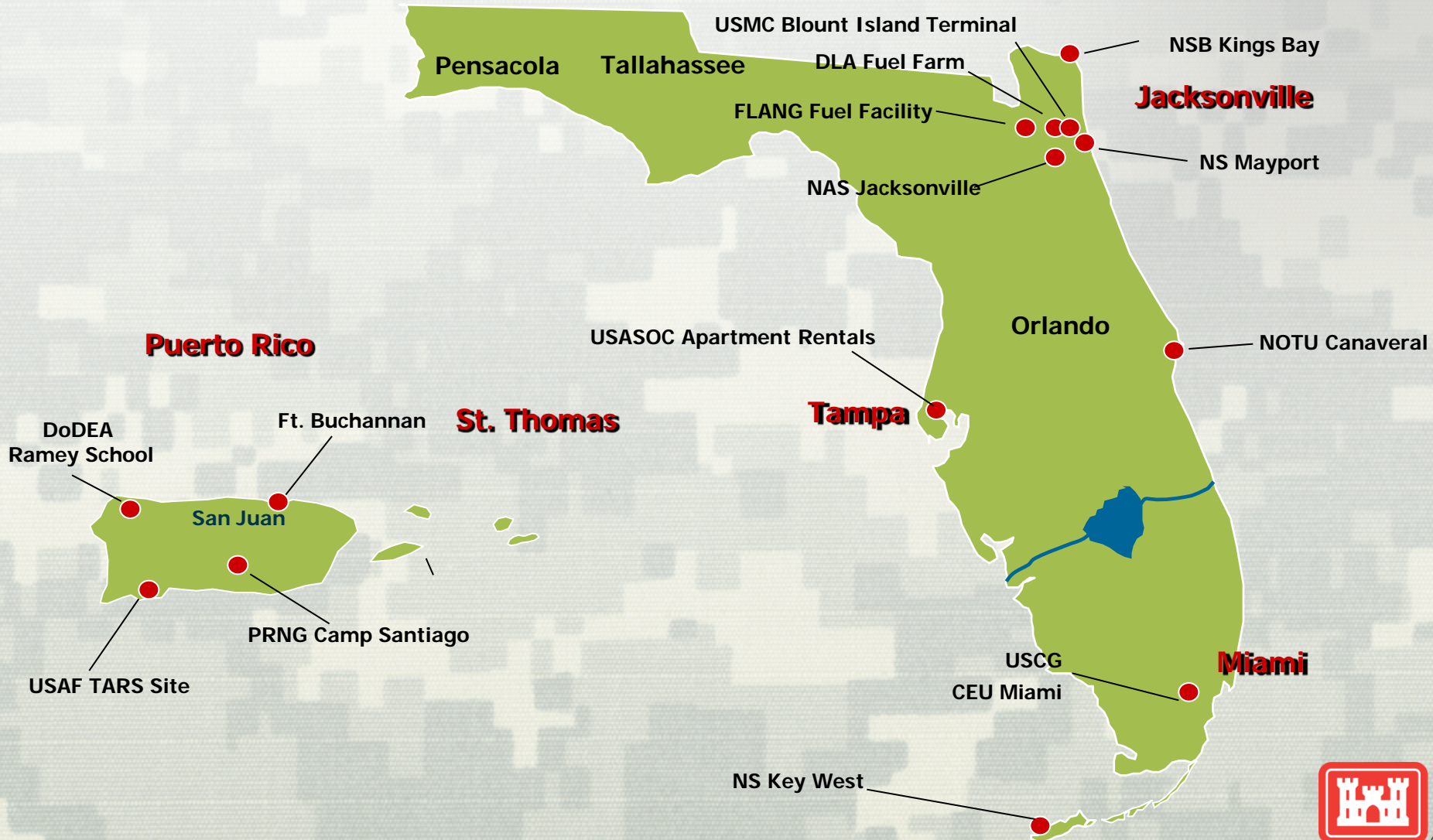


## INTERAGENCY AND INTERNATIONAL SERVICES (IIS)

**IIS Program**



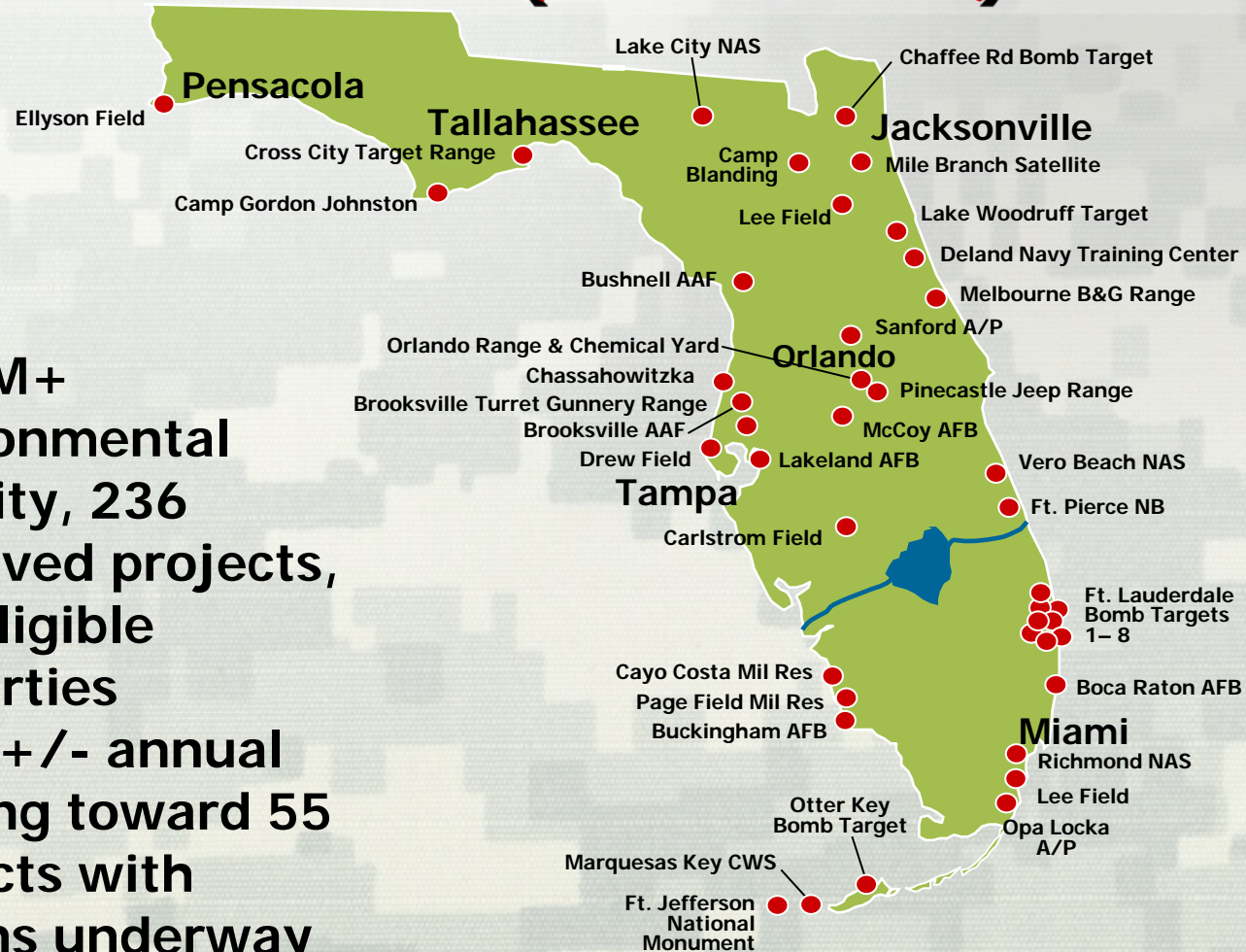
# Military Program





# Defense Environmental Restoration Program Formerly Used Defense Sites (DERP-FUDS)

- \$900M+ Environmental Liability, 236 approved projects, 563 eligible properties
- \$12M+/- annual funding toward 55 projects with actions underway





# Shore Protection

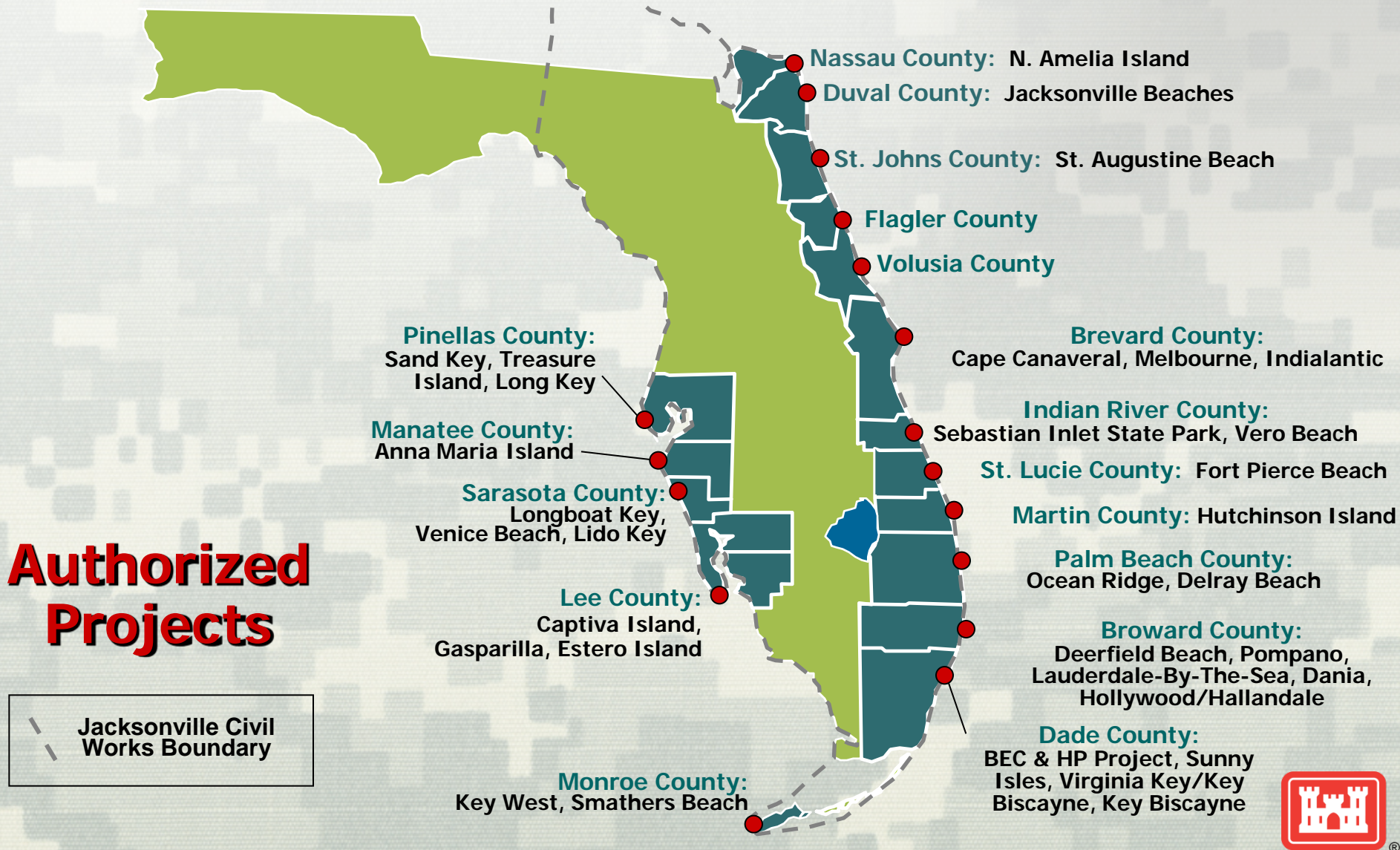
- Largest Shore Protection Program in the Nation
- Constructs/maintains over 30% of the nation's shore protection projects
- 17 Counties involved
- Sustainable and Innovative – Hot Topic
- Partnership with sponsors and agencies
- Protects property from flood damage
- Beneficial for recreation, habitat, and economy
- 3 renourishment awards scheduled for FY12





## SHORE PROTECTION

# Jacksonville Program





# Navigation

## 900 miles of Inland Waterways

- 6 navigation locks
- Atlantic Intracoastal Waterway (AIWW) from Jacksonville to Miami
- Okeechobee Waterway (OWW) connecting the Atlantic Ocean to the Gulf of Mexico
- Parts of the Gulf Intracoastal Waterway (GIWW)

## Harbors

- 17 Deep Draft Harbors
- 20 Shallow Draft Harbors

MAYPORT



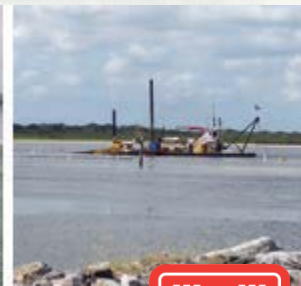
PORT OF TAMPA



MIAMI HARBOR



PONCE INLET





## NAVIGATION

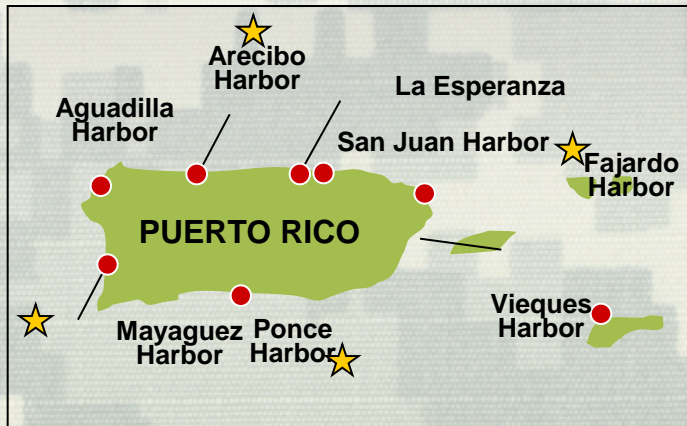
# Jacksonville Program

## Authorized Projects



17 Deep Draft Harbors

Jacksonville Civil Works Boundary



★ St. Petersburg Harbor

★ Tampa Harbor

★ Manatee Harbor

★ Charlotte Harbor

Hernando Beach

Anclote River

Clearwater Pass

Johns Pass

Longboat Pass

New Pass

OWW

Fort Myers Beach



Key West Harbor

GIWW

Horseshoe Cove

Suwannee River

FLORIDA

Kings Bay/Fernandina ★

Jacksonville Harbor ★

Palm Valley Bridge

Ponce de Leon Inlet

St. Augustine Harbor

IWW Fernandina to Key West

Canaveral Harbor ★

Ft. Pierce Harbor ★

St. Lucie Inlet

Palm Beach Harbor ★

Pt. Everglades Harbor ★

Hillsboro Inlet

Miami River ★

Miami Harbor ★





# Dredging Program Coastal & Navigation

## Where we've been:

- 2005 23 awards \$116,000,000
- 2006 11 awards \$51,000,000
- 2007 10 awards \$48,000,000
- 2008 9 awards \$48,000,000
- 2009 13 awards \$72,000,000
- 2010 13 awards \$81,000,000
- 2011 10 awards \$100,000,000

## Where we're going:

- 2012 14 awards scheduled

FY 2012 Project Dredging Scheduled	Award
St. Johns Co. SPP	Dec-11
Kings Bay EC/ Fernandina Hrb	Dec-11
St. Lucie Inlet	Dec-11
Tampa Harbor-Gadsen/A/C/Alafia	Jan-12
Miami Harbor Deepening-Contract A	Apr-12
Port Everglades O&M	Jun-12
Canaveral O&M	Jun-12
KingsBay Inner/USMC	Jun-12
Jacksonville Hrb O&M	Jun-12
Mayport O&M	Aug-12
Navy Fuel Pier	Aug-12
Palm Beach Harbor	Sep-12
Dade County SPP	Sep-12
Martin County SPP	Sep-12





# Puerto Rico Flood Damage Reduction



## LEGEND

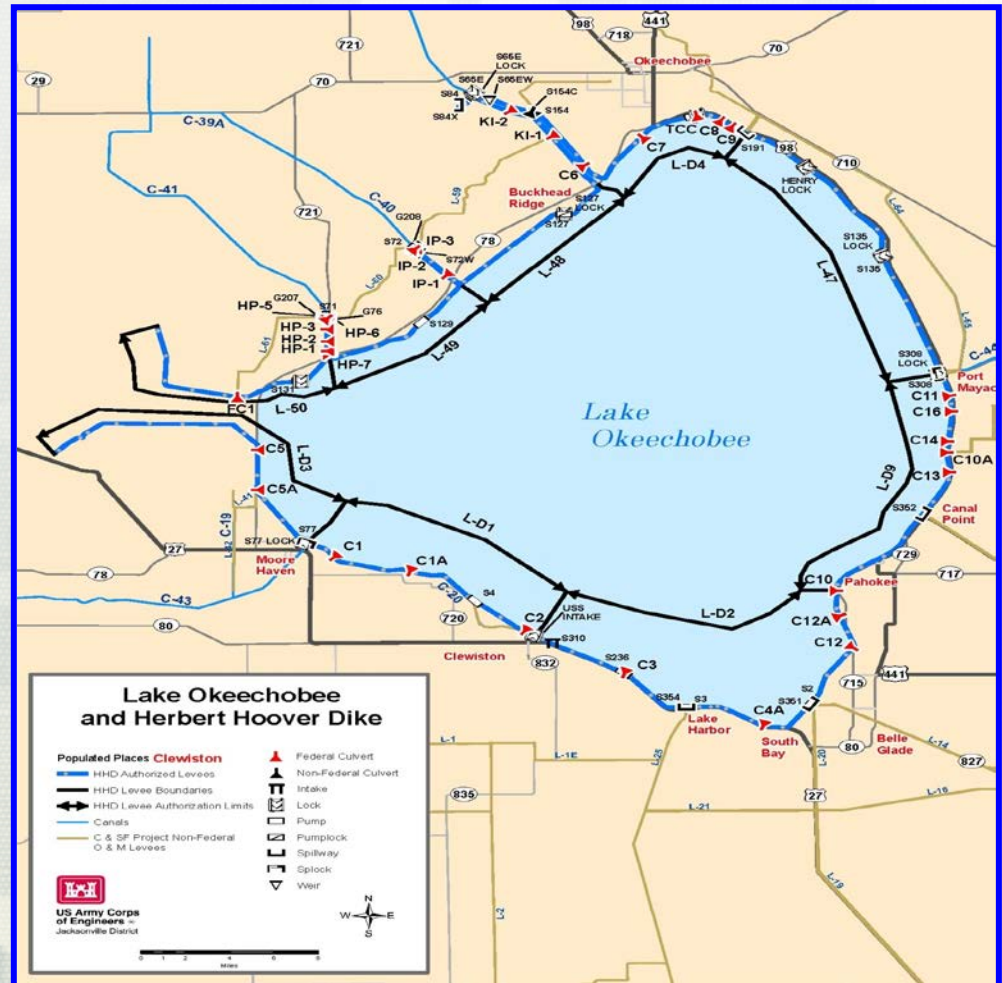
- Active Projects
- No current activity





# Herbert Hoover Dike Rehabilitation

## Lake Okeechobee: "The Heart of the South Florida Ecosystem"



# Herbert Hoover Dike





# Complex System

## 143 miles of levee

## 5 spillway outlets

## 5 spillway inlets

## 32 federal culverts

## 9 navigation locks

## 9 pump stations

**Built by hydraulic  
dredge and fill  
methods, not to  
today's construction  
standards**  
*No overflow capacity*





# Rehabilitation Schedule



- **Construction timeline\***
  - ▶ Reach 1 cut-off wall completion FY13
  - ▶ Federal culvert removal and replacement – began in FY 11, complete in FY16



- ▶ **Systems Analysis Report fixes may start in FY15**

*\* Based on funding stream*





# Ecosystem Restoration

## South Florida Ecosystem Restoration Program







# Kissimmee River Restoration

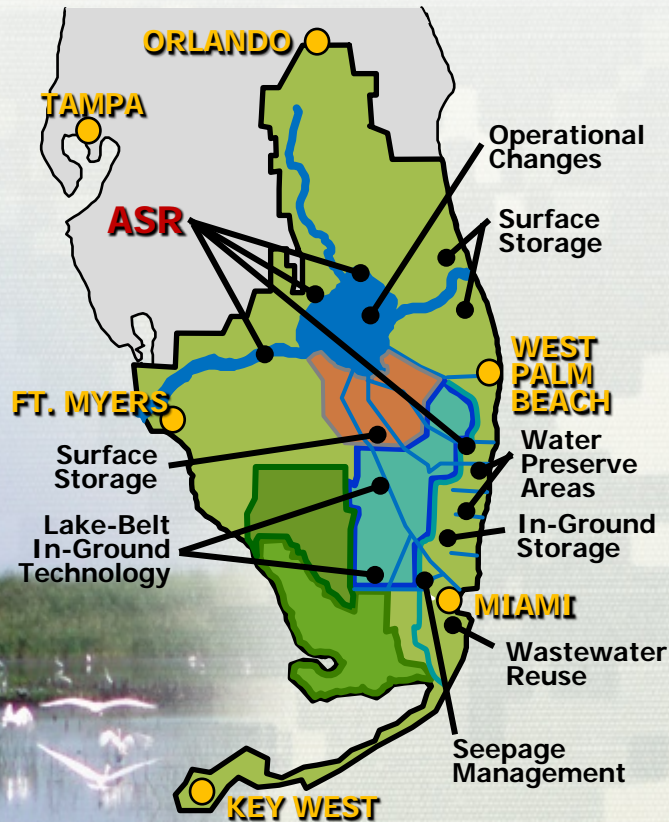


Looking north from the southern extent of Phase IVB backfill. This picture shows the recarved river channel for Phase IVB as well as the recarved river channel from Phase IVA





# Comprehensive Everglades Restoration Plan Opportunities

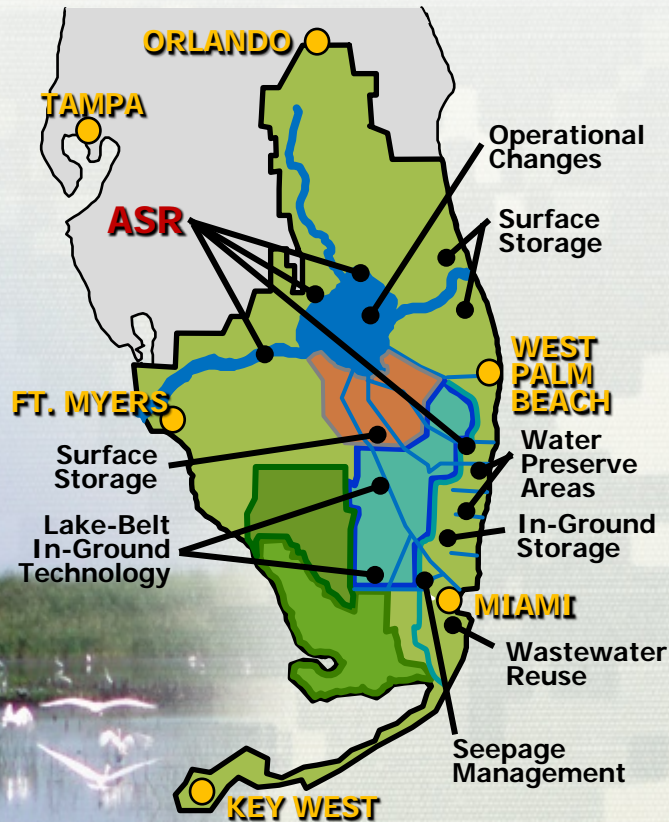


- Excavation and dredging – silt, sand and rock removal
- Earthwork – levee construction, site clearing, grading
- Water control structures – dams, pump stations, culverts, salinity barriers
- Building construction – pump buildings, recreational facilities, infrastructure repair
- Environmental cleanup – remediation and treatment





# CERP Opportunities Continued



- Environmental sampling, water quality testing and monitoring
- Fish and wildlife monitoring & protection
- HTW sampling & remediation
- Data management
- Outreach support





# A-E Opportunities



- Engineering Design
- Surveying
- Core Drilling
- Mapping
- Studies
- Investigations
- Modeling
- Cost Engineering
- Project Management Support





# Current A-E Contractors

## ■ Small Business Contracts

- The Geosystems L.P. Team
- Javier E. Bidot & Associates, Inc
- EAC Consulting, Inc
- Civil Services, Inc

## ■ Large Business Contracts

- US Cost, Inc
- Arcadis U S, Inc
- HDR Engineering
- Parsons Infrastructure & Technology Group, Inc.
- CDM Federal Programs Corp
- Taylor Engineering, Inc
- HNTB





# AE Forecast Awards for FY 2012

Project Title	Project Location	Projected Contract Award	Type Work	Estimated Award Value	Set-Aside Category	Procurement Method	Notes
General Civil & Military Design Contract	FL, PR	1Q 12 (advertise)	AE Svcs IDIQ	\$5M Max	Unrestricted	Brooks Act	Base w/4 options
General Civil & Military Design	FL, PR	Under Eval	AE Svcs IDIQ	\$5M Max	8(a)	Brooks Act	Base w/4 options
Topo/Hydro Surveying	Puerto Rico and USVI	4Q 12 (advertise)	AE Svcs IDIQ	\$2.5M Max	SB Program	Brooks Act	Base w/4 options
Civil & Military Geotech	FL, PR	Under Eval	AE Svcs IDIQ	\$5M Max	8(a) and Small Business	Brooks Act	Base w/4 options





# Construction Award Forecast FY 2012 (2)

Project Title	Project Location	Projected Contract Award	Type Work	Estimated Award Value	Set-Aside Category	Procurement
Contract 8: Levee, Flowway Berm, and Weir Construction	South Dade County	3Q 12	Construction	\$10 - \$25M	TBD – based on market research	RFP
Contract 12 Reach 3 Backfill	Kissimmee, FL	2 Q 12	Construction	\$10 - \$25M	SB Program	RFP
Replacement of Federal-Owned Culverts 3	Area of HDD	3Q 12	Construction	\$10 - \$25M	UNR	RFP
Replacement of Federal-Owned Culverts 4A	Area of HDD	3Q 12	Construction	\$10 - \$25M	UNR	RFP





# Construction Award Forecast

## FY 2012 (3)

Project Title	Project Location	Projected Contract Award	Type Work	Estimated Award Value	Set-Aside Category	Procurement
DODEA Antilles Elementary School	Ft. Buchanan, PR	1Q 12	Construction	\$25 - \$100M	UNR	RFP – Design Build
Beach Renourishment – St Johns County	St. Johns County, FL	1Q 12	Construction	\$10 - \$25M	UNR	IFB
Miami Harbor Deepening – 50'	Dade County, FL	3Q 11	Construction	\$100 - \$250M	UNR	RFP
Dike Raising & Rehabilitation of Weirs-Dredge Material Disposal	Duval County, FL	3Q 12	Construction	\$10 - \$25M	TBD – based on market reserach	RFP





# Single Award Construction Forecast

## FY 2012 (3)

Project Title	Project Location	Projected Contract Award	Type Work	Estimated Award Value	Set-Aside Category	Procurement
Contract 8: Levee, Flowway Berm, and Weir Construction	South Dade County	3Q 12	Construction	\$10 - \$25M	TBD – based on market research	RFP
Contract 12 Reach 3 Backfill	Kissimmee, FL	2 Q 12	Construction	\$10 - \$25M	SB Program	RFP
Contract 18A S-65 Gated Spillway Addition	Kissimmee, FL	3 Q 12	Construction	\$10 - \$25M	SB Program	RFP





# For More Information

## A-E Contracts

- **Karen R. Pitchford, Chief, A-E Contract Administration Section/ maintains ACASS for Jacksonville District**  
(904)232-3295 Karen.R.Pitchford@usace.army.mil
- [http://www.saj.usace.army.mil/Divisions/Contracting/Branches/AE\\_Construction/index.htm](http://www.saj.usace.army.mil/Divisions/Contracting/Branches/AE_Construction/index.htm)

## Small Business Opportunities

- **Beth Myers, SBO Deputy**  
(904) 232-1150 elizabeth.r.myers@usace.army.mil
- **Nancy Krause, Small Business Specialist**  
(904)232-2798 nancy.j.krause@usace.army.mil
- <http://www.saj.usace.army.mil/Divisions/Executive/Branches/SBO/index.htm>

