



**PREPARING FOR A
MORE SUSTAINABLE
FUTURE**

Pedro Melendez

VP, Planning, Engineering & Construction

SOCIETY FOR AMERICAN MILITARY ENGINEERS

5.22.24

About JEA

JEA is the largest not-for-profit, **community-owned** utility in Florida and the eighth largest in the country, **providing energy and water services** to more than a million people. Our **2,200+ team members** work every day to provide services that are **reliable, affordable and sustainable**.



This Is JEA

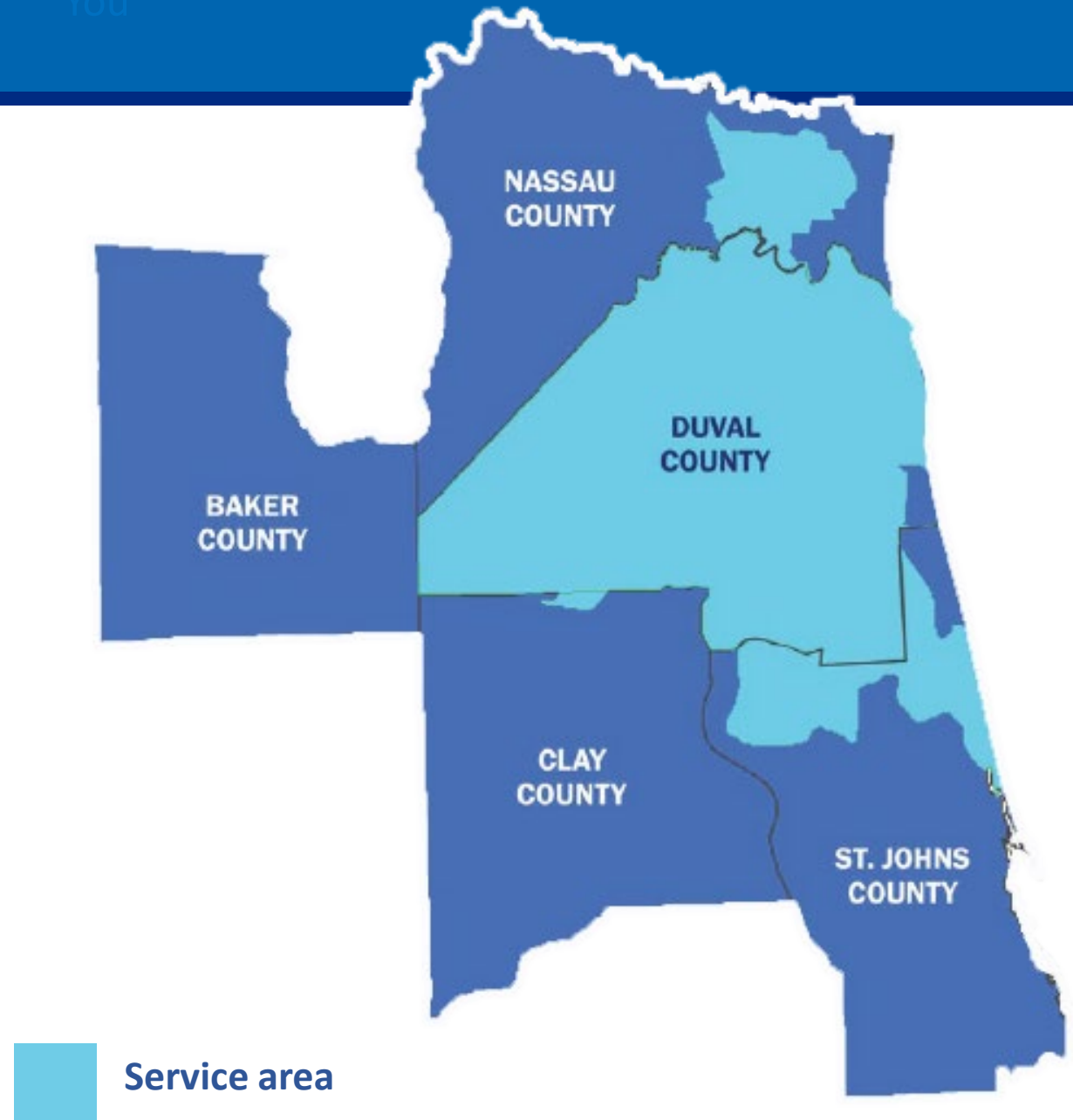


Our Service Territory

You

JEA has served Jacksonville as a municipal electric system **since 1895** and has operated water systems **since 1997**.

JEA's service area covers **over 900 square miles** including Duval County and parts of Clay, St. Johns and Nassau counties.



JEA Systems

Providing foundational services to more than 1M NE Florida residents



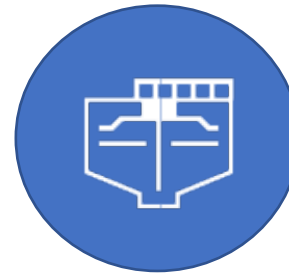
Electric
905 square miles
of service area



Water
4-county service area
5,135 miles of delivery system



District Energy System
3 chilled water plants
Total capacity: **19,900 tons**



Wastewater
10 reclamation facilities



Reuse System
516 miles of pipe

JEA Integrated Resource Planning Goals

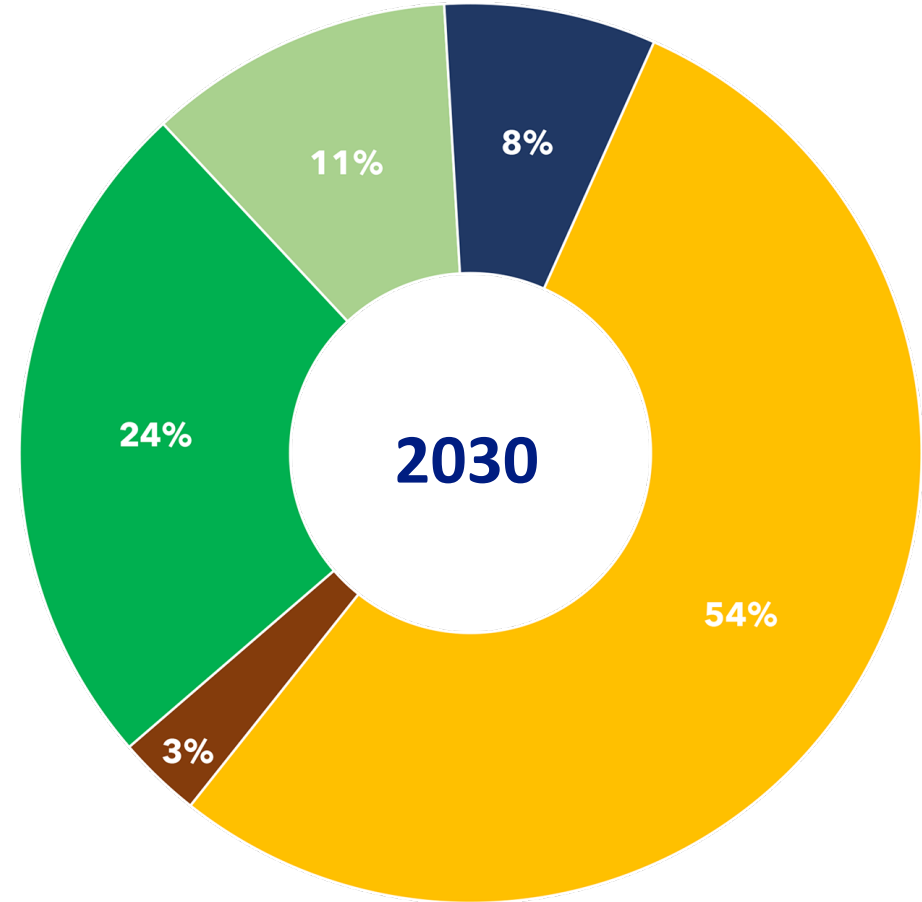
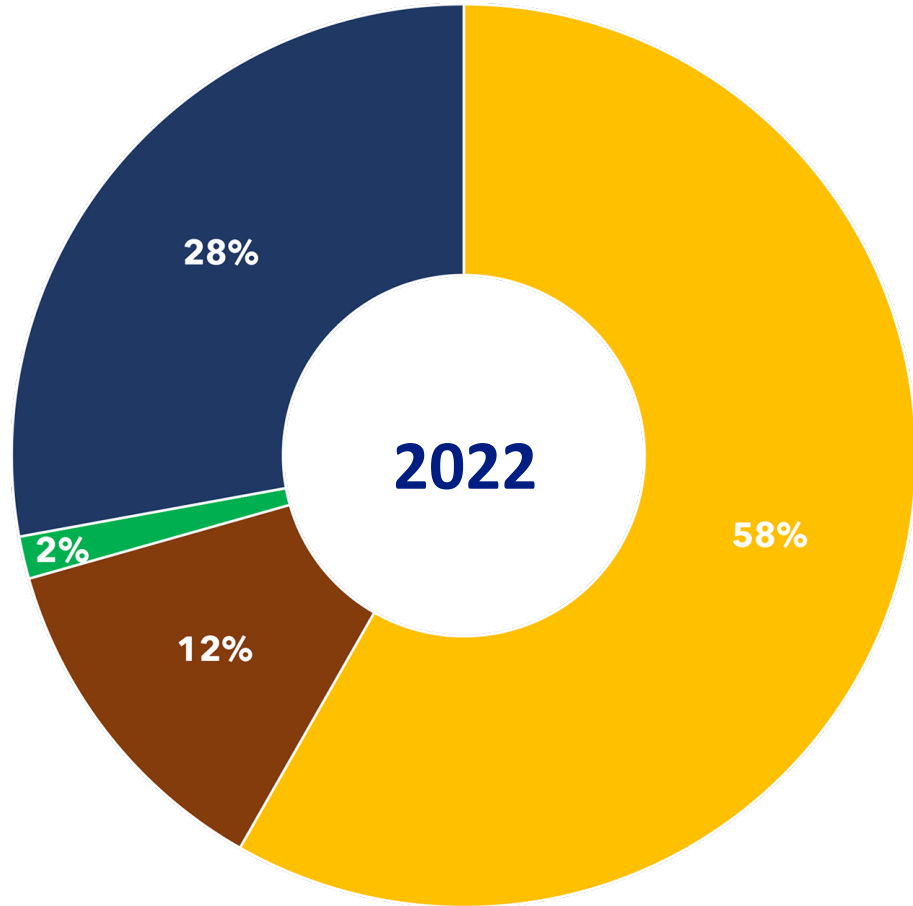
BY
2030

- ▶ **35% Clean Energy**
- ▶ **Retire Less Efficient Generation**
- ▶ **100% Clean Energy to Serve JEA Facilities**
- ▶ **Offset Electrification Demand with Energy Efficiency Programs**

Accomplished together by 2030, these goals will result in 80% CO₂ Reduction since 2005.



JEA Net Energy Mix



Renewables

Nuclear

Purchase Power

Natural Gas

Coal/Petcoke

Historical CO₂ Emissions

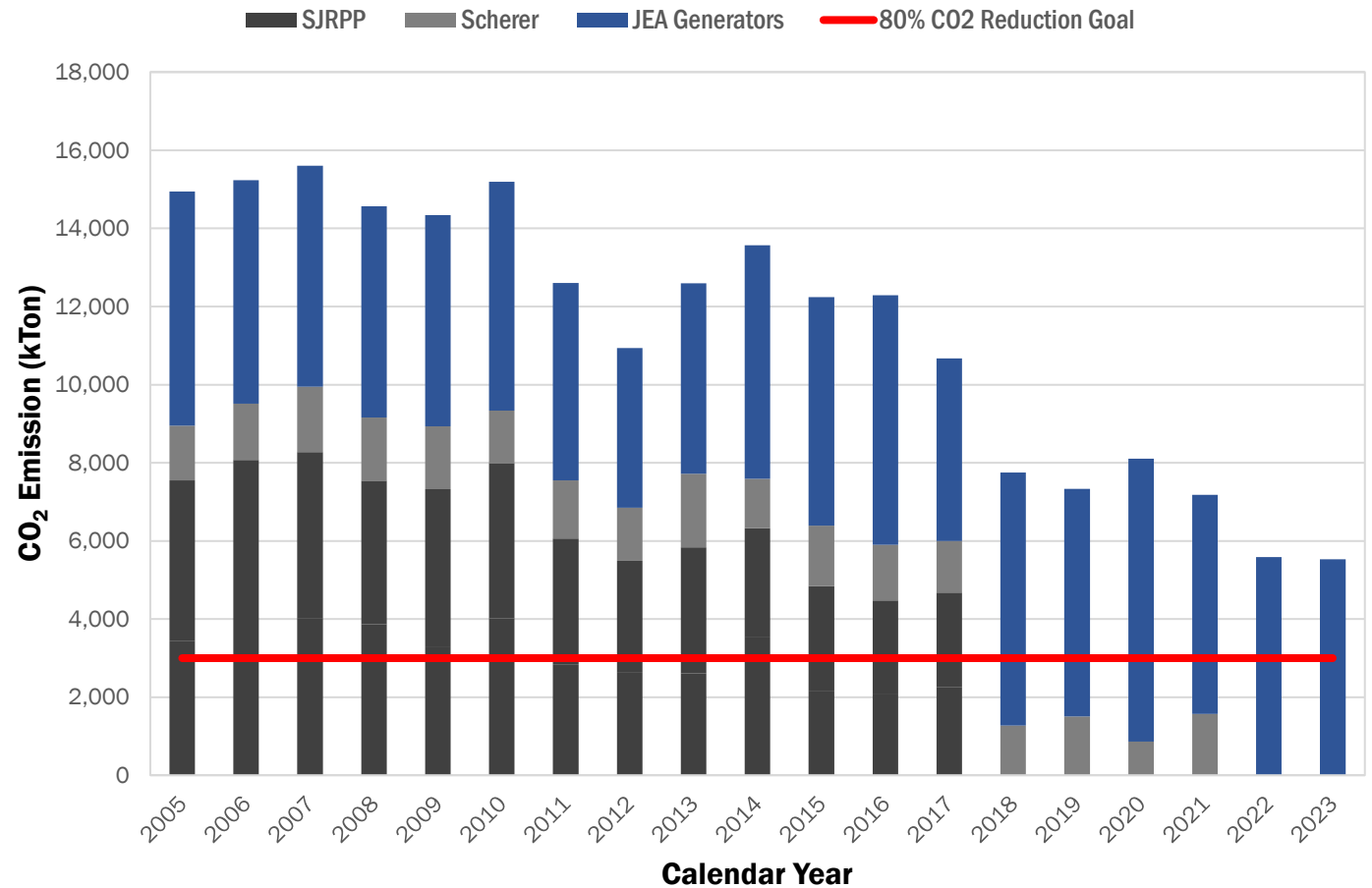
St. Johns River Power Park

1 and 2

Retirement of coal-fired units in 2017 led to average reduction of 4,800 kTons of CO₂ emissions per year.

Scherer 4

Retirement of coal-fired units in 2021 resulted in an additional reduction of 1,300 kTons of CO₂ emissions per year – approximately 17% of total CO₂ emissions attributed to JEA.



Costs vs. Resources

We have worked to balance **reliability**, **affordability**, and **sustainability**. The IRP identified least-cost resource plans to meet forecasted energy requirements between **2022 through 2051**.

Estimated cost (Net Present Value) considering IRP inputs:

- ▶ \$16.5B to produce energy with existing generation resources
- ▶ \$16B to produce energy with new resources
 - ▶ 1275 MW Solar/Battery
 - ▶ 571 MW High Efficiency Gas
 - ▶ NGS Unit 3 Decommission

Solar Energy

- ▶ Recently finalized agreements for development of **three solar sites** in Jacksonville
- ▶ Will provide enough power for **37,000 homes**
- ▶ Equal to **reducing 47,000 vehicle emissions** annually.



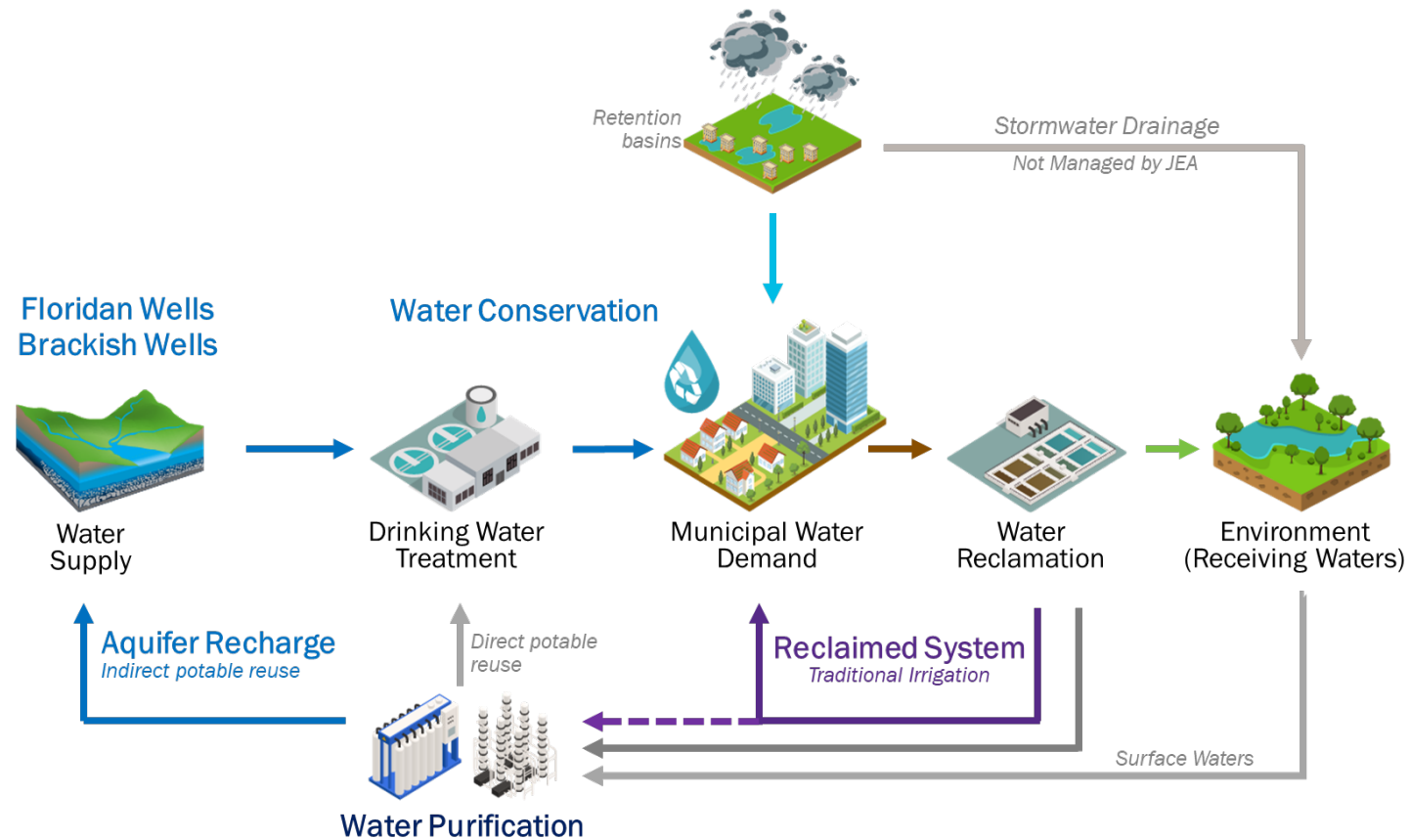
Plant Vogtle

- ▶ Vogtle Unit 3 and Unit 4 **entered commercial operation** on July 31, 2023, and April 29, 2024, respectively.
- ▶ The nuclear energy from these units will make up about **13 percent** of JEA's energy mix.



Integrated Water Resource Planning (IWRP)

- ▶ Last updated 2021
- ▶ Plan updated every 5 years
- ▶ Holistic approach
- ▶ Protects the Aquifer and diversifies the water supply
- ▶ Maximizes use of available resources while minimizing discharge



IWRP Planning Objectives



Water Supply Certainty

Ability to meet seasonal water demands during average and dry weather conditions



Cost- Effectiveness

Accounts for both near-term change in customer water rates and long-term levelized unit cost of water supply



Environmental Stewardship

Reduces treated wastewater discharge to St. Johns River and increases groundwater sustainability



Community Acceptance/ Implementation Ease

Addresses community concerns and ease of implementation of projects



Operational Flexibility

Ability to move water supplies from part of water service area to another to maximize reliability

IWRP Solutions

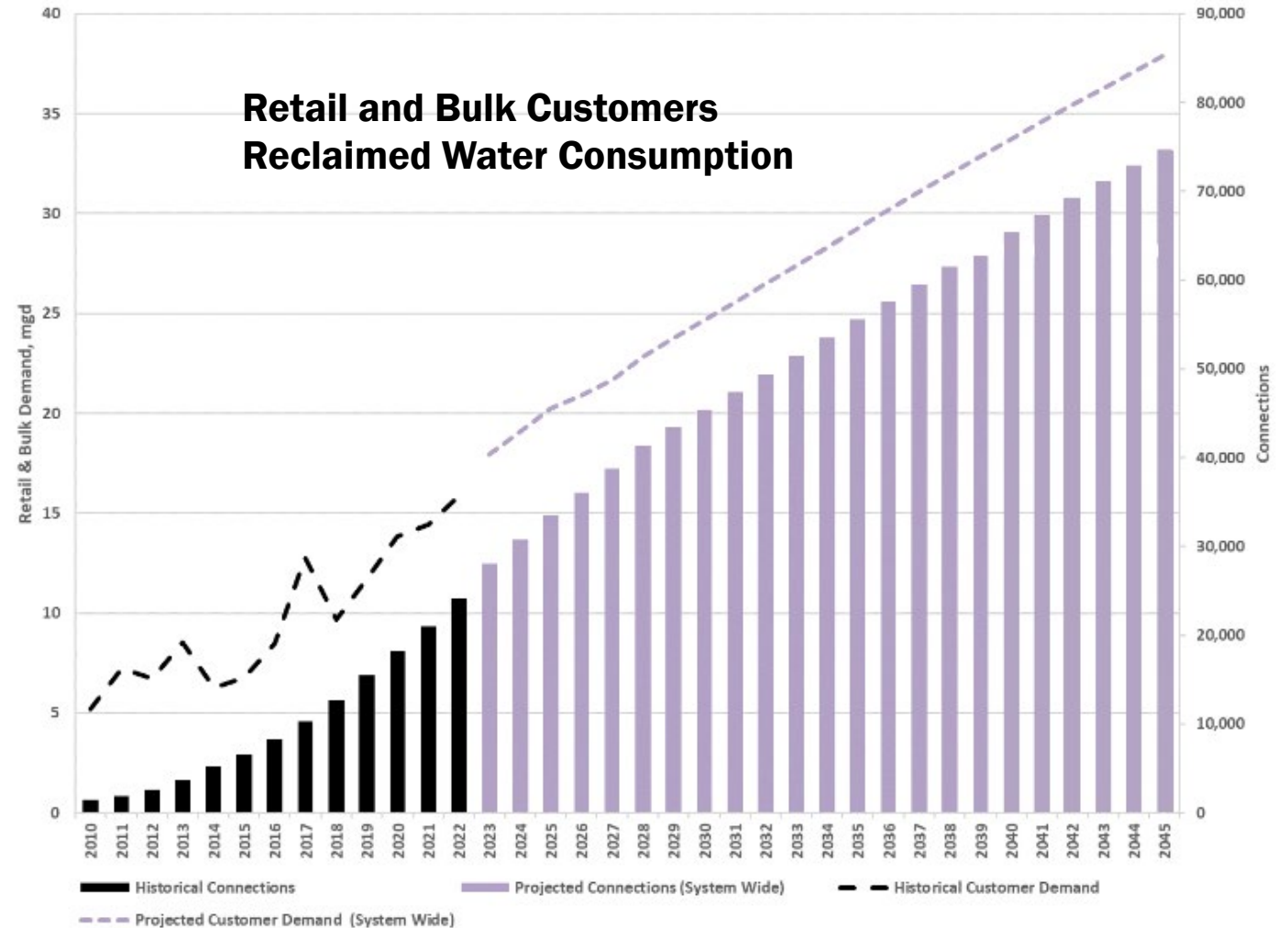
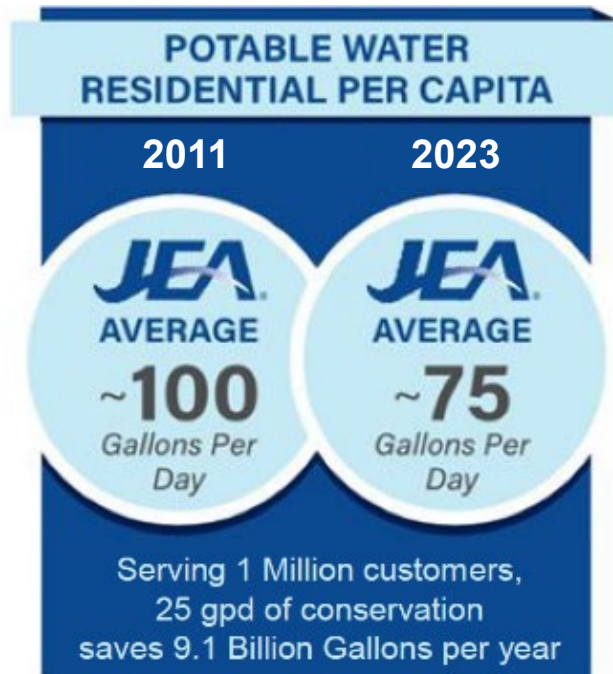
- ▶ Comprehensive Multi-Year Demand Side Management (DSM)/Conservation Program
- ▶ Expansion of JEA's reclaimed water system
- ▶ Aquifer replenishment with indirect potable reuse and/or wetlands



Reclaimed Water Program

Current system:

- ▶ Total customers: 28,240
- ▶ Retail usage: 16 MGD
- ▶ JEA usage: 6 MGD



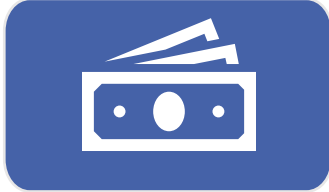
H2.0[®] Purification Program

Program benefits:

- ▶ Protects region's water resources
- ▶ Increases availability of water supply
- ▶ Protects Aquifer sustainability
- ▶ Maximizes use of available water resources
- ▶ Reduces water discharge to St. Johns River



Surface Water Discharge Elimination



- ▶ High cost associated with compliance with no additional revenue. Potential for cost escalation.



- ▶ Requires significantly more engineering, permitting and construction capacity than what is currently available in Northeast Florida or the state.



- ▶ Timeline is challenging.



- ▶ Rules and regulations required for implementation of the projects are not in place. Permitting and testing could take significantly longer than anticipated.



- ▶ Current staffing levels and training may need to be increased to operate facilities.

Septic Tank Phase Out Program

- ▶ The City and JEA working together to address failing septic tanks, to reduce amount of harmful nutrients going into local waterways
- ▶ 35 septic tank failure areas identified by Duval County Health Department.
- ▶ Over 23,000 septic tanks within these failure areas.



You

Q&A



Building Community

An aerial photograph of a city skyline at sunset. The sky is a mix of orange, yellow, and blue. In the foreground, a modern glass-walled building is illuminated from within. To its left is a classical-style building with many windows. In the background, several skyscrapers are visible, including one with a 'CHASE' sign and another with a 'TRUST' sign. The JEA logo is overlaid in the upper center of the image.

JEA[®]

Building Community