

U.S. ARMY CORPS OF ENGINEERS CARIBBEAN DISTRICT (SAA)

Today, Tomorrow, Always

Date: 5 March 2025

Presented by:
COL Chuck Decker, Commander



U.S. ARMY



US Army Corps
of Engineers®



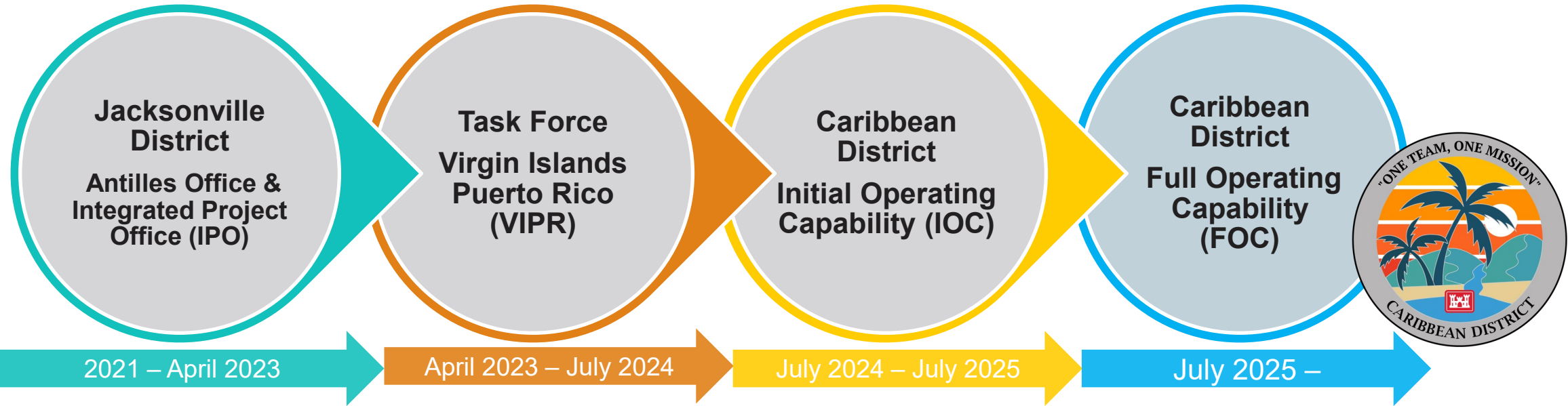
Rio de La Plata, Dorado Bridge and ACBM Toe Key Construction



Rio Puerto Nuevo, La Chuleta Construction

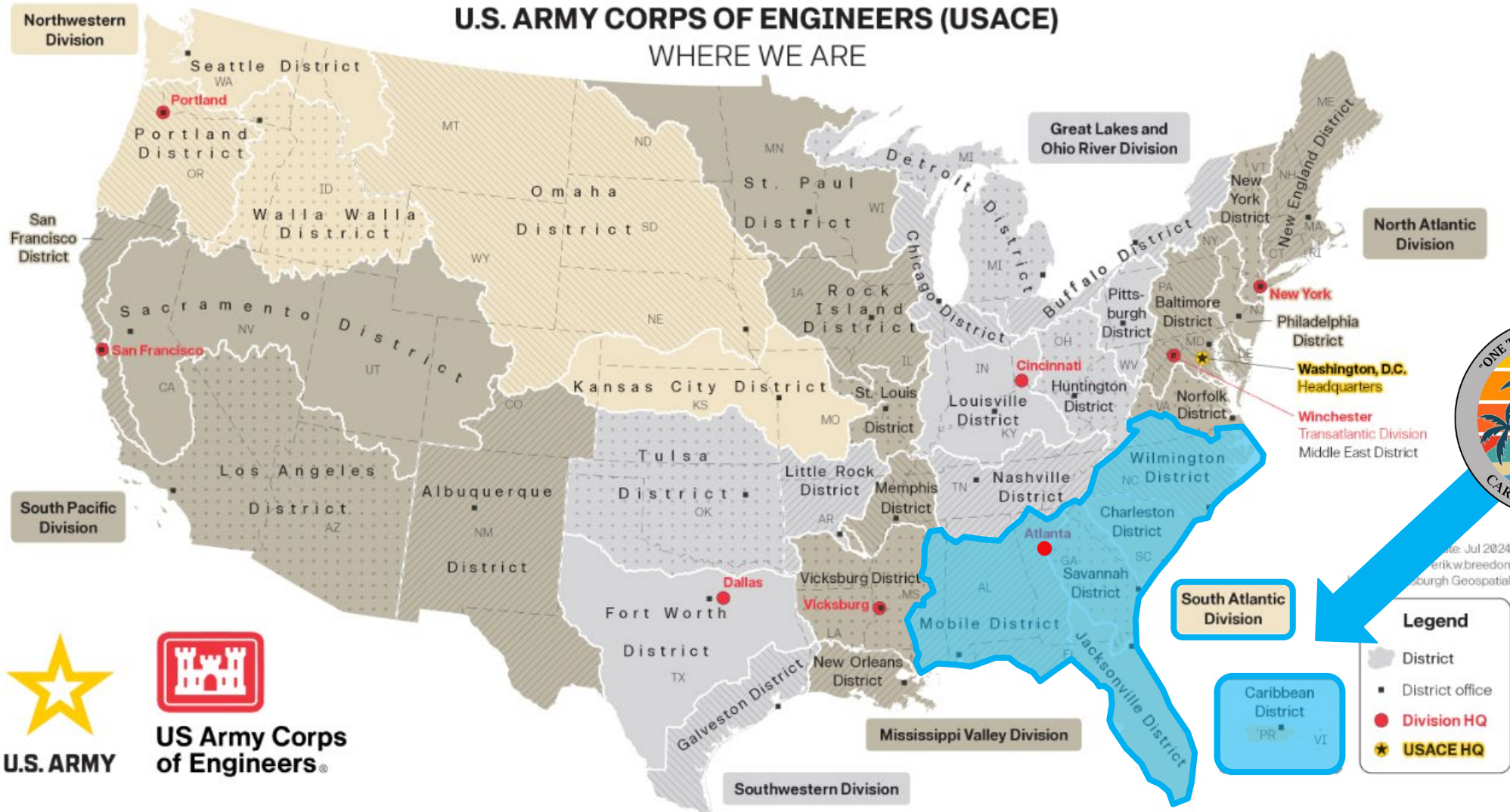


EVOLUTION OF A DISTRICT





43RD USACE DISTRICT



US Army Corps of Engineers®



Jul 2024
erik.w.breedon
burgh Geospatial



AREA OF OPERATIONS



Civil Works

- Puerto Rico & USVI

MIL/IIS

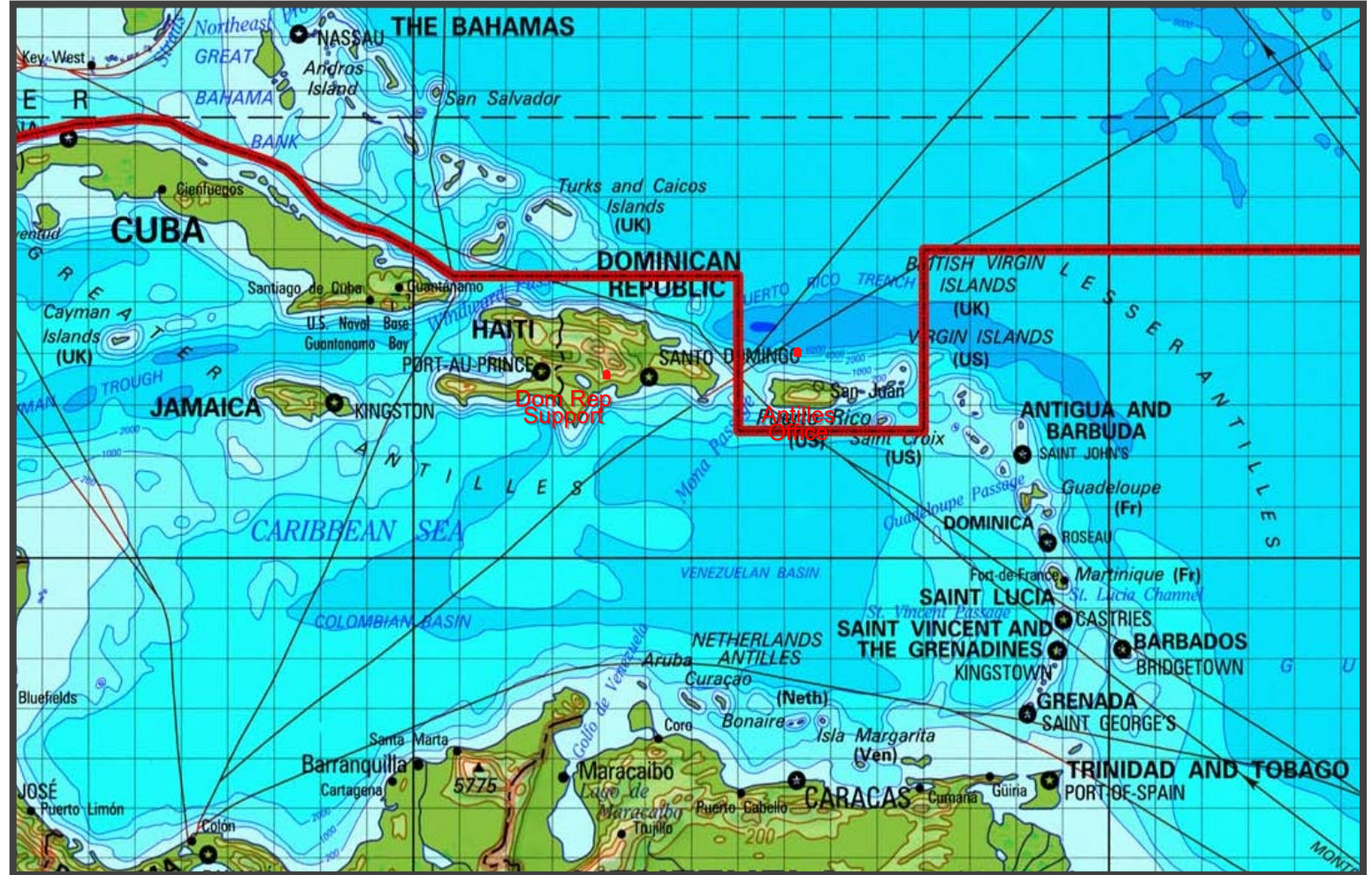
Caribbean Basin Nations COCOM

Bahamas	N
Bermuda	N
Puerto Rico	N
U.S. Virgin Islands	N

Aruba	S
Antigua and Barbuda	S
Barbados	S
Cuba	S
Curacao	S
Dominica	S
Dominican Republic	S
Grenada	S
Haiti	S
Jamaica	S
Saint Kitts and Nevis	S
Saint Vincent & the Grenadines	S
Saint Lucia	S
Trinidad and Tobago	S

Others in the AOR:

- CESAC – 81st RD, DVA Minors
- CELRL – USAR
- CESAS – DODEA, DVA Majors
- CESAJ – FUDS
- Other Districts Enterprise Assigned

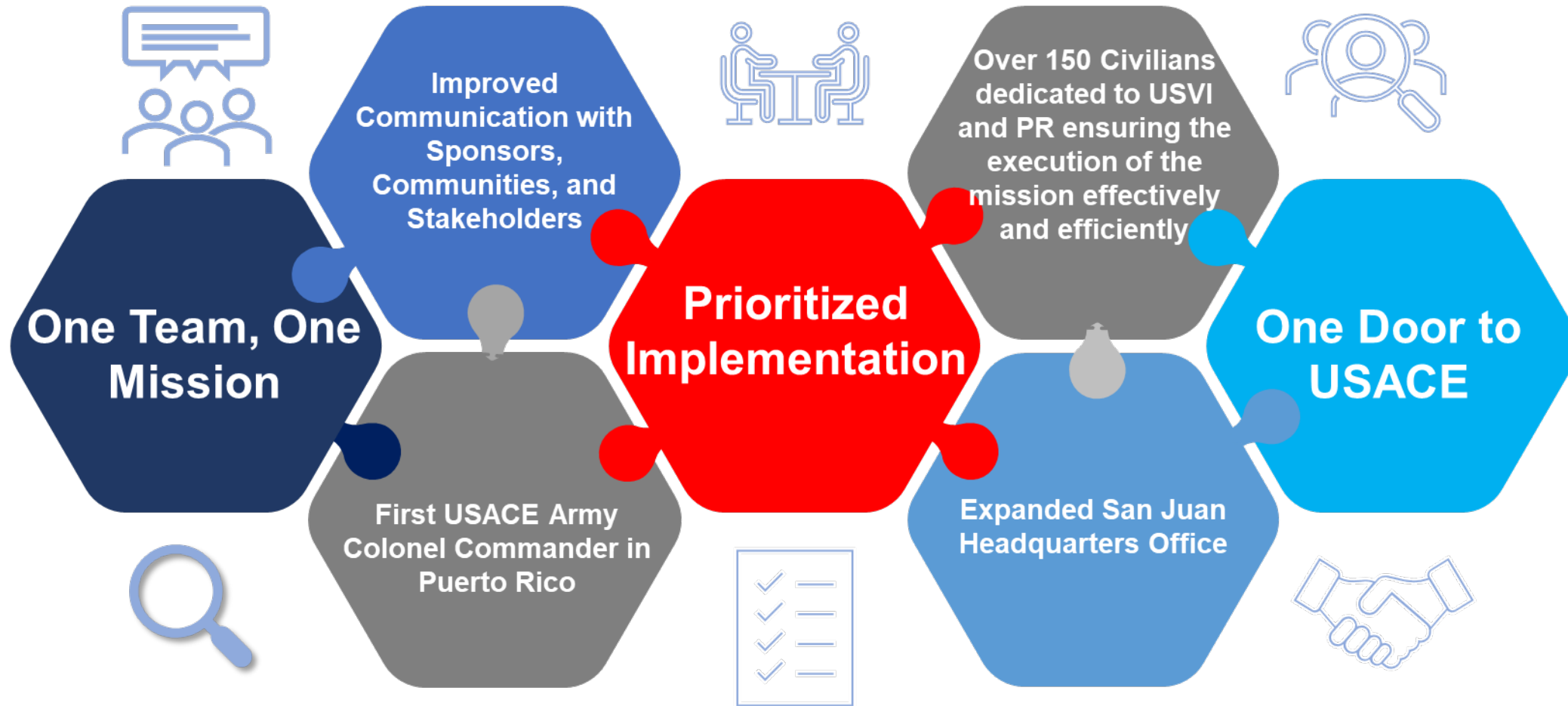




CARIBBEAN DISTRICT



Provides additional leadership bandwidth and focus on priority missions in U.S. Virgin Islands, Puerto Rico, and Greater Antilles





CARIBBEAN DISTRICT PROJECTS OVERVIEW

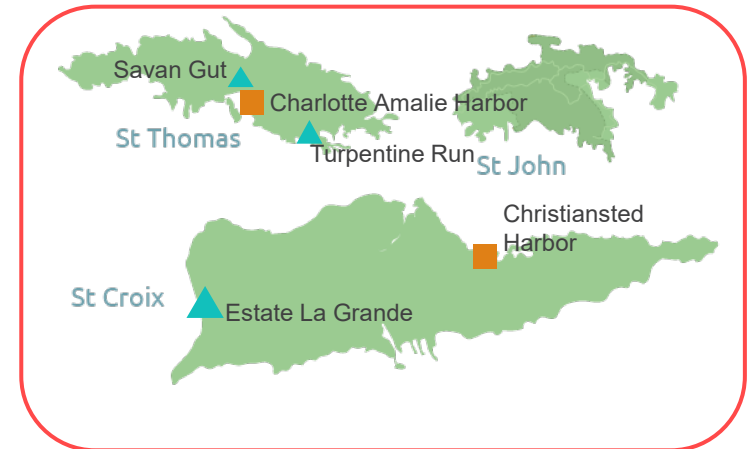
(STUDY, DESIGN, AND CONSTRUCTION)




Puerto Rico



U.S. Virgin Islands



-  Interagency and International Services
-  Military Construction (MILCON)
-  Flood Risk Management
-  Deep Draft Navigation
-  Aquatic Ecosystem Restoration
-  Coastal Storm Risk Management
-  Non-structural Interagency



Civil Works Program

Military Construction and Interagency and International Services(IIS) Program

Small Projects Program

Continuing Authorities Program (CAP)
Rio Aibonito
Estate La Grange
Floodplain Management Services
Ponce
Planning Assistance to States
USVI Compound Flooding Hotspots
Interagency Non-structural FPMS
PR Watersheds
PR All Hazards
PR Dam Safety

Investigations

Christiansted Harbor (WRDA 2020)
Charlotte Amalie Harbor (WRDA 2020)
Rio Nigua Validation Report & NEPA

Construction

RPN Contract 2 Roosevelt Bridge – (FRM – BBA 2018)
Rio de la Plata (Dorado Bridge) (FRM)

Operations & Maintenance

San Juan Harbor O&M (Nav-BIL)
Inspection of Completed Works, PR & USVI
Project Condition Surveys, PR & USVI

PED

Aquatic Ecosystem Restoration (AER)	Coastal Storm Risk Management (CSRM)
Cano Martin Pena	San Juan Metro (CSRM)
Flood Risk Management (FRM)	
Rio de la Plata (FRM – BBA 2018)	
Rio Grande de Arecibo (FRM – BBA 2018)	
Rio Puerto Nuevo (FRM – BBA 2018)	
Rio Guanajibo (FRM – BBA 2018)	
Rio Nigua (FRM – BBA 2018)	
Rio Grande de Manati (FRM - DRSAA)	
Rio Culebrinas (FRM - DRSAA)	
Rio Guayanilla (FRM - BIL)	
Savan Gut (FRM - BIL)	
Turpentine Run (FRM - DRSAA)	

MILCON

FTB: Army Family Housing
PRARNG: Camp Santiago Barracks
PRARNG: Camp Santiago DFAC
PRARNG: Camp Santiago HQ
VIARNG: STT Vehicle Maintenance Shop
VIARNG: STX Civil Support Facility
ERCIP: MCA - FY-20 Puerto Nuevo USAR Solar Array

Installation Readiness

PRARNG: Camp Santiago Ammunition Supply Point

Environmental

PRARNG: Fort Allen Storm Water Mitigation Design

IIS

Guajataca Dam
PREPA Water Assets

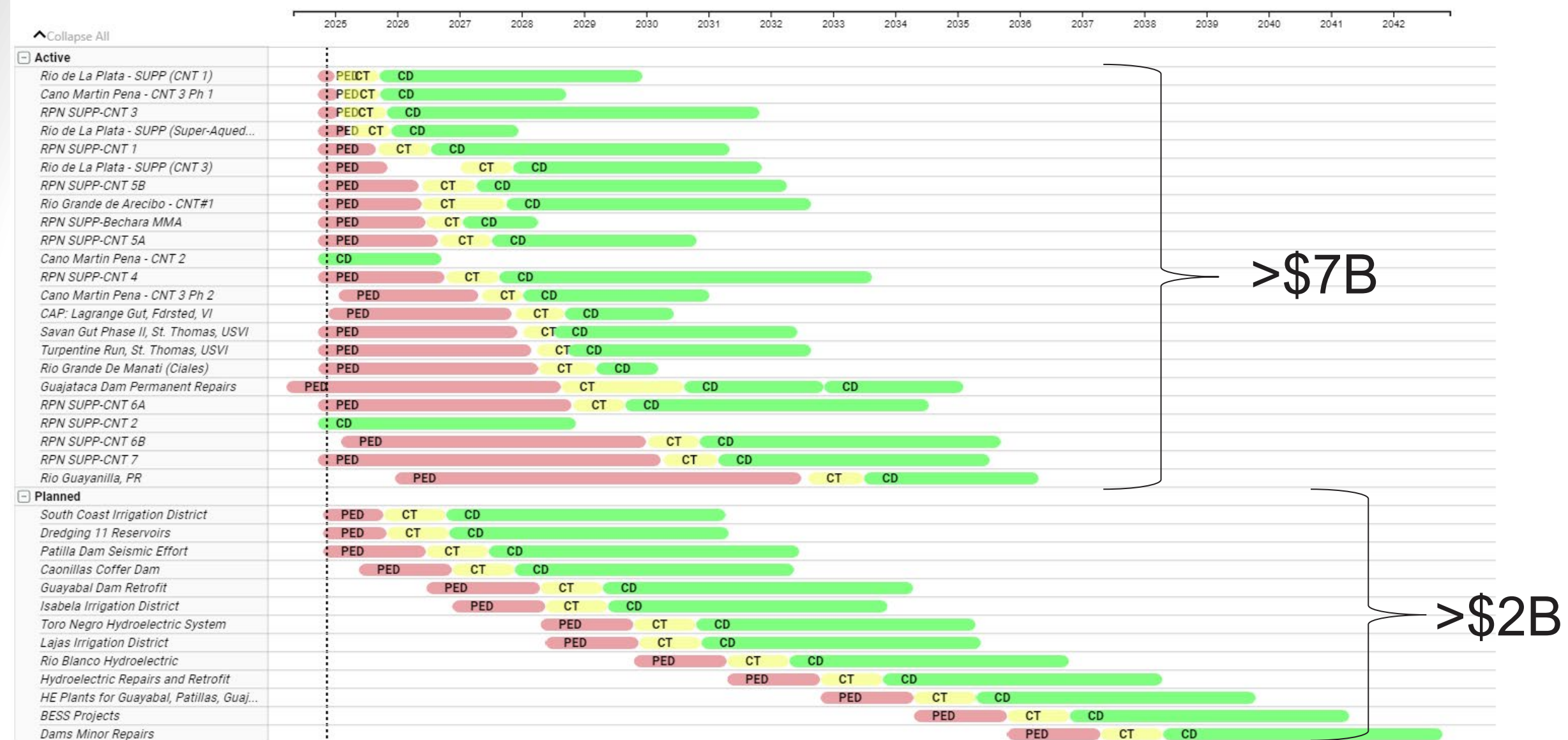
Program Value > \$10 Billion



INTEGRATED SCHEDULE FOR CIVIL WORKS*



Design Acquisition/Award Construction



*Under continued development



UPCOMING SAA CONTRACT OPPORTUNITIES

CONSTRUCTION CONTRACTS					
PROJECT MISSION	PROJECT NAME	MAGNITUDE OF CONSTRUCTION	ACQUISITION STRATEGY	SOLICITATION TYPE	ADVERTISE DATE
Civil Works	Caño Martin Peña (Contract 3 Phase 1)	\$25M - \$100M	Unrestricted	RFP – BVTO	MAR 2025
MILCON	St Croix Civil Support Training Facility	\$25M - \$100M	Unrestricted	RFP – BVTO	MAR 2025
Civil Works	Rio Puerto Nuevo (La Chuleta O&M)	\$0M - \$25M	TBD	TBD	APR 2025
Civil Works	Rio Puerto Nuevo (Contract 3)	\$250M - \$500M	Unrestricted	RFP – BVTO	APR 2025
Civil Works	Rio de la Plata (Contract 1)	\$250M - \$500M	Unrestricted	RFP – BVTO	MAY 2025
Civil Works	Rio de la Plata (Super Aqueduct)	\$25M - \$100M	TBD	TBD	JUN 2025

A&E / SERVICE / CMS CONTRACTS					
PROJECT MISSION	PROJECT NAME	ESTIMATED VALUE	ACQUISITION STRATEGY	SOLICITATION TYPE	QUARTER ADVERTISED
CW-MILCON	Military and Civil Works Design IDIQ	\$200M+	TBD	TBD	Q1 FY26



THE FANTASTIC FOUR



Rio de La Plata (2 contracts)

Contract 1 – Construction
Expected advertisement: May 2025
Magnitude: \$250M-\$500M

Super-Aqueduct Relocation Contract – Construction
Expected advertisement: Jun 2025
Magnitude: \$25M-\$100M



Caño Martin Peña

Contract 3 Phase 1 – Construction
Expected advertisement: Mar 2025
Magnitude: \$25M-\$100M

Over **\$1B** in construction
contract awards
over the next 9 months



Rio Puerto Nuevo

Contract 3 – Construction
Expected advertisement: Apr 2025
Magnitude: \$250M-\$500M



Flood Risk Management



Aquatic Ecosystem Restoration



RIO PUERTO NUEVO - OVERVIEW



COMPLETED (COST SHARED)

CONTRACTS 1, 1A, 2A/AR, 2AA, 2C1, 2D WALLS

STATUS: 2D Walls, last completed, was May 2022
AMOUNT: \$470M

- Kennedy Bridge seismic retrofit; 36-inch water line
- First 1.3 miles of channel improvements
- Quebrada Margarita channel excavation and confluence wall; lower Puerto Nuevo channel dredging
- Bechara Channel secant pile wall box culvert; 90-inch sewer line modification; open channel work
- De Diego Expressway Bridge abutments; east and west pier drill shaft reinforcement
- Quebrada Margarita Stilling Basin
- Construction of 350-foot left channel wall and 750-foot right channel wall at channel confluence.

CONTRACT - LA CHULETA

- Upland Material Management Area (future capacity of ~350,000 cubic yards of material)

ONGOING (SUPPLEMENTAL) CONSTRUCTION

CONTRACT 2 | ROOSEVELT BRIDGE

- Roosevelt Avenue Bridge replacement



REMAINING (SUPPLEMENTAL) CONSTRUCTION

CONTRACT 1 | UPPER MARGARITA CHANNEL

- Sewer line relocation
- Construction of .63 miles of channel improvements at Upper Quebrada Margarita

CONTRACT 3 | MAIN CHANNEL (RIO PIEDRAS)

- Channel walls
- 1.1 miles of Main Channel improvements

CONTRACT 4 | LAS AMERICAS BRIDGES

- Channel, Stilling Basin and Bridge Replacements
 - ▶ 4A-1: Las Americas Expressway Bridge
 - ▶ 4A-2: Piñero Avenue Bridge East
 - ▶ 4A-3: Northeast Access Ramp Bridge
 - ▶ 4A-4: Southeast Access Ramp Bridge

CONTRACT 5 | NOTRE DAME & W. PIÑERO BRIDGE

- 5A: Notre Dame Bridge replacement
- 5B: Piñero Avenue Bridge West replacement; Quebrada Josefina downstream to Río Piedras

CONTRACT 6A/6B | MAIN CHANNEL / BUENA VISTA

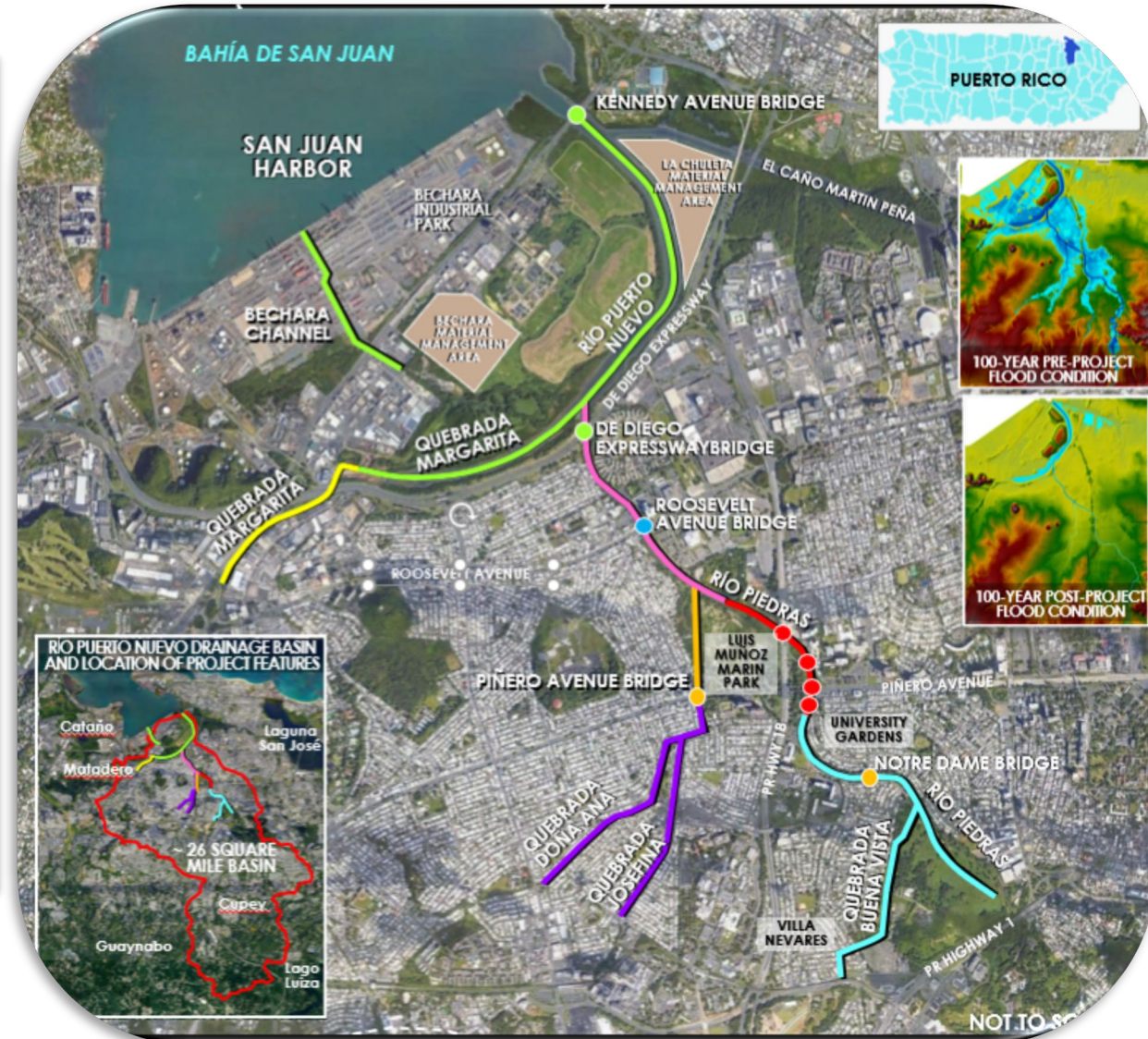
- 1.75 miles of Río Piedras channel improvements
- 4 bridges (2 new; 2 replacements)
- .80 miles channel diversion at Quebrada Buena Vista

CONTRACT 7 | JOSEFINA & DOÑA ANA CHANNEL

- 10 bridge replacements
- 5000 LF. of Quebrada Josefina and 4400 LF. of Quebrada Doña Ana channel improvement

CONTRACT - BECHARA

- Upland Material Management Area (future capacity of ~600,000 cubic yards of material)





RIO DE LA PLATA - OVERVIEW



PROJECT FEATURES AND IMPLEMENTATION PLAN

CONTRACT 1A
Completed 2015

DORADO BRIDGE CHANNEL WIDENING AND SCOUR PROTECTION
• Anticipated Completion: 2024

ARTICULATED CONCRETE BLOCK MAT AND TOE KEY
• Substantial Completion: 2023

SUPPLEMENTAL CONTRACT 1
Features
• 4 concrete culverts
• 1.6 miles of river channel improvements
• 2.9 miles of earthen levees
• 30 acres of wetland mitigation

SUPPLEMENTAL CONTRACT 3
Features:
• 1.4 miles of river channel improvements
• 1.3 miles of earthen levees

SUPPLEMENTAL CONTRACT: NORTH COAST SUPERAQUEDUCT RELOCATION
Features:
• 1,000-foot relocation of a 72-inch potable water line, which supplies water to the northern municipalities





CAÑO MARTÍN PEÑA - OVERVIEW



PROJECT IMPLEMENTATION, FEATURES, AND MAP

CONTRACTS

CONTRACT 1 | VEGETATION REMOVAL

STATUS: Completed June 2023, \$3.4M, 36 acres vegetation removed.

SOLID WASTE REMOVAL CONTRACT

STATUS: Completed Oct 2023, \$2.3M, 15K Tons removed + Modification for additional 3.8K Tons (\$600K).

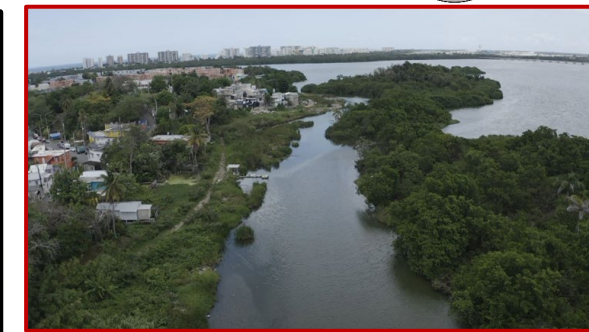
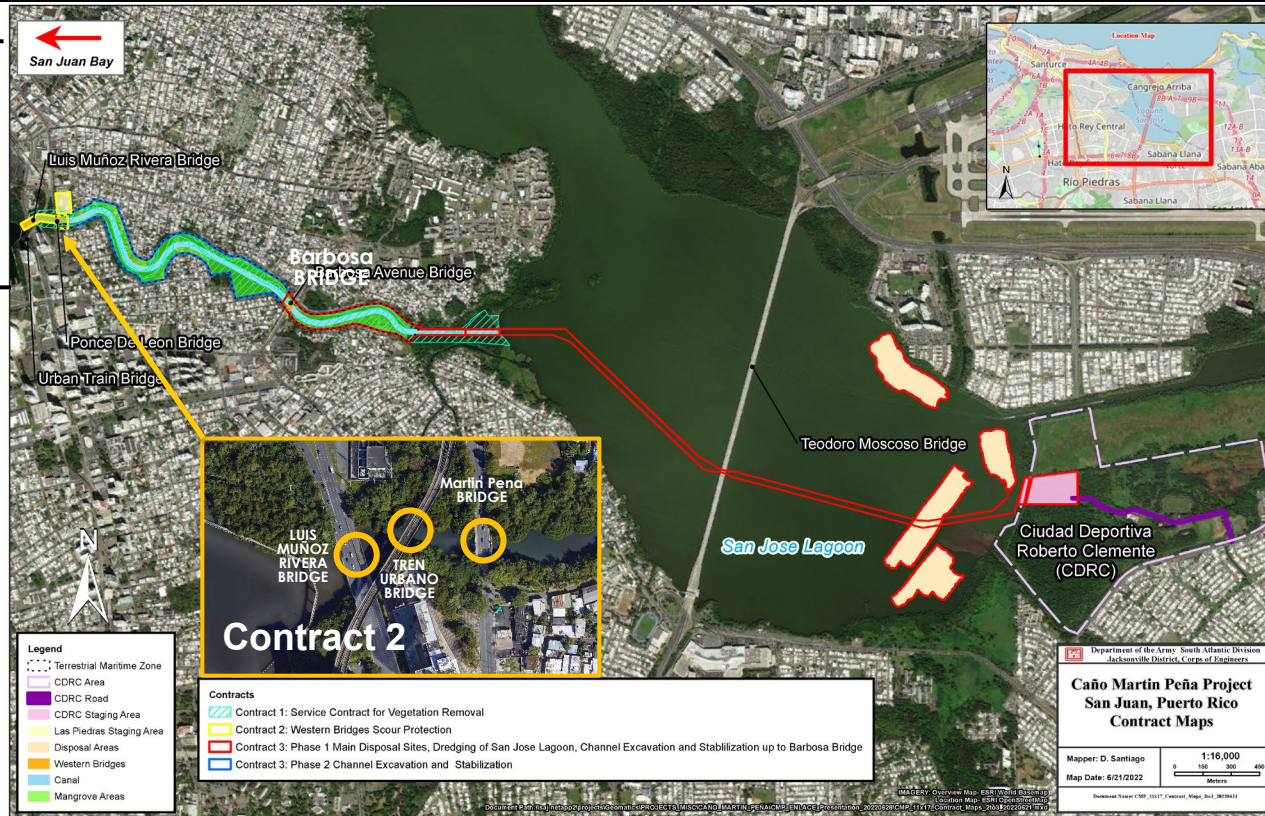
CONTRACT 2 | WESTERN BRIDGES SCOUR PROTECTION.

Martín Peña, Tren Urbano, and Luis Muñoz Rivera

STATUS: Awarded Sep 2024, \$14.7M. Expect completion in Oct 2026

SCOPE

- Excavation of ~ 25K CY of material from the western end of the channel
- Construction of a 115-foot-wide by 6.5-foot-deep channel located at western bridges.
- Installation of riprap at the channel bottom and the side slopes to prevent scour
- Steel sheet pile walls will be installed at the eastern end



Contract 3: Phase 1



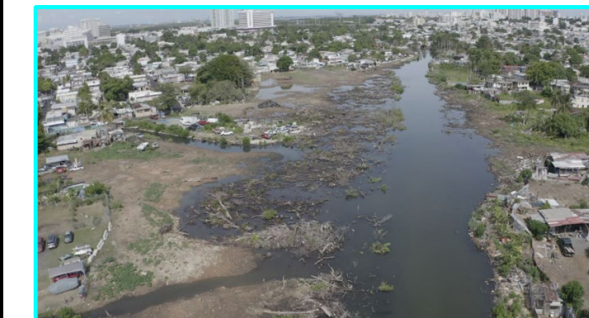
Contract 3: Phase 2

CONTRACT 3 | CHANNEL EXCAVATION / STABILIZATION

STATUS: Phase 1 & Phase 2 Contracts award anticipated in Sep 2025 and Jan 2028, respectively

SCOPE

- 1.8 miles channel dredging
- 2 miles access channel dredging from staging area to eastern end of CMP
- Bank stabilization to include sheet pile
- Barbosa Bridge scour protection
- ~ 35 acres Mangrove/wetland restoration for entire channel
- Recreation features



Contract 3: Phase 2



PARTNER WITH US!

Website: <https://www.saa.usace.army.mil>
Follow us on: LinkedIn, Facebook, and Instagram

ONE TEAM, ONE MISSION