

# JAXPORT

*Northeast Florida's  
Economic Engine and  
Southeast Gateway*

## ***JAXPORT: STATE OF THE PORT***

***IT'S MORE THAN JUST DOCKS AND DREDGING***



PRESENTATION TO  
**JACKSONVILLE POST,  
SOCIETY OF AMERICAN MILITARY ENGINEERS (SAME)**  
WEDNESDAY, SEPTEMBER 30<sup>TH</sup>, 2015

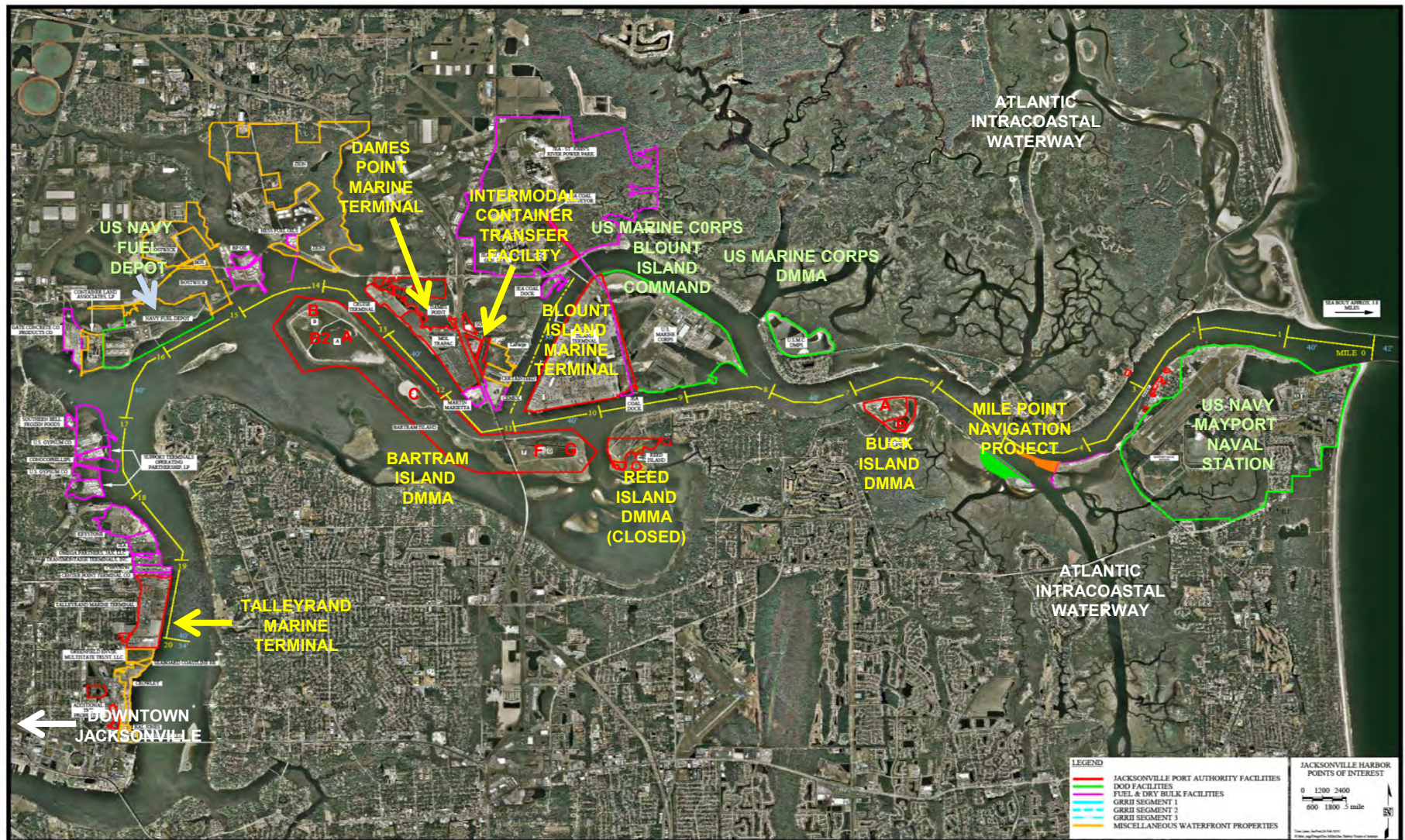
Presentation by Joe R. Miller, Senior Director, Facilities Development, JAXPORT

# STATE OF THE PORT AGENDA

- **INTRODUCTION**
- **JAXPORT – A QUICK INTRO**
- **OPPORTUNITIES AND CHALLENGES**
- **VIDEO**
- **UPDATE ON PORT INFRASTRUCTURE AND FACILITIES**
- **FY 2016 CAPITAL PROJECTS & 5 YEAR PLAN**
- **QUESTIONS AND ANSWERS**



# JACKSONVILLE HARBOR



Note: DMMA = Dredge Material Management Area



# JAXPORT



## STRATEGIC MILITARY PORT

- ✓ **One of 16 Strategic Ports in U.S.**
- ✓ **Only Florida port handling military cargo**
- ✓ **Ranks top 5 for tonnage**
- ✓ **22,000 tons of military cargo in FY13**

## LANDLORD PORT

- ✓ **Independent Government Agency**
- ✓ **Created by Florida Legislature**
- ✓ **Governing Board (4 Mayor appointees, 3 Governor appointees)**
- ✓ **Provide and maintain terminals and equipment**





# TALLEYRAND *MARINE TERMINAL*



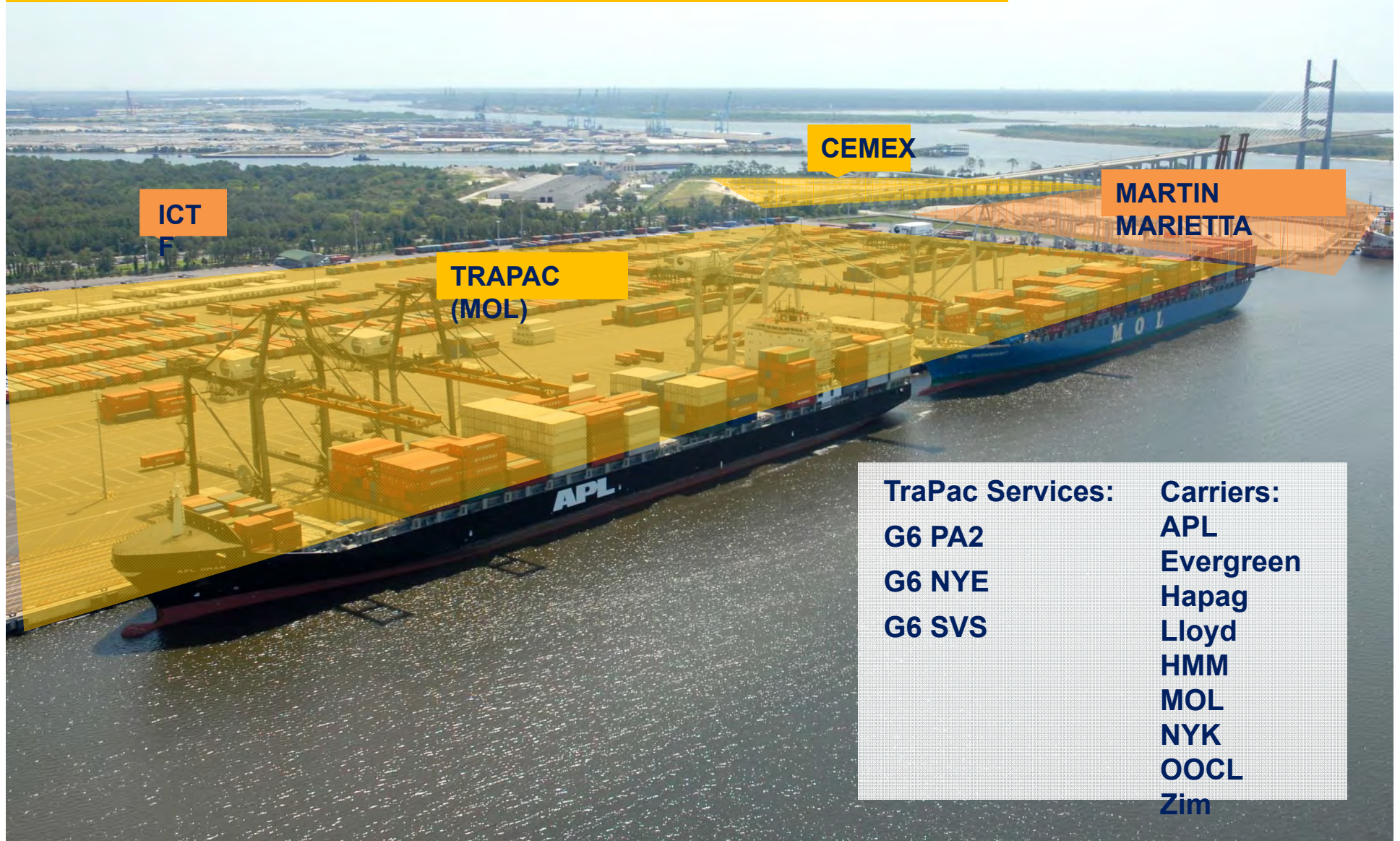


# BLOUNT ISLAND *MARINE TERMINAL*





# DAMES POINT *MARINE TERMINAL*



## TraPac Services:

G6 PA2  
G6 NYE  
G6 SVS

## Carriers:

APL  
Evergreen  
Hapag  
Lloyd  
HMM  
MOL  
NYK  
OOCL  
Zim



# CARGO TYPES



**CONTAINERS**



**RO/RO**



**BREAK BULK**



**DRY BULK**



**LIQUID BULK**



**PROJECT CARGO**



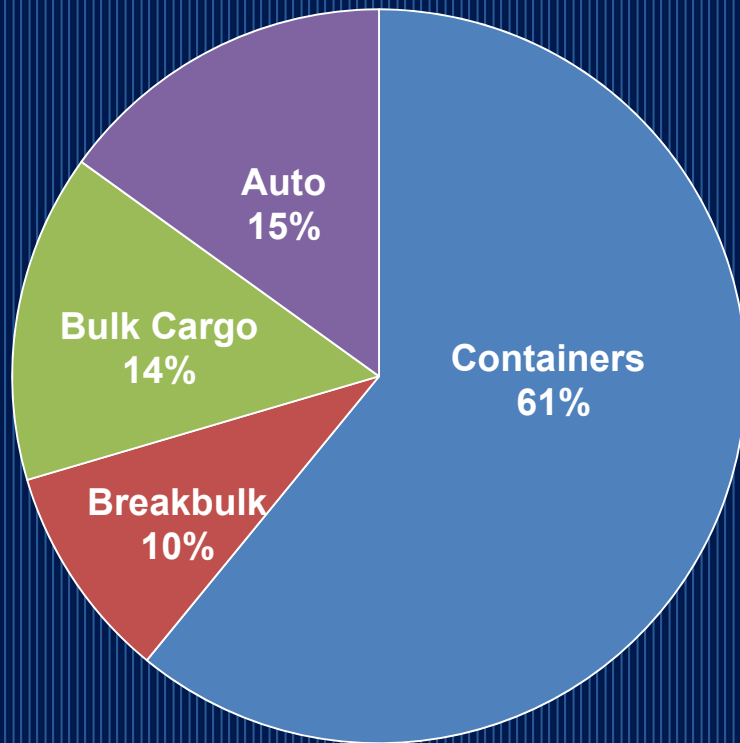
**MILITARY**



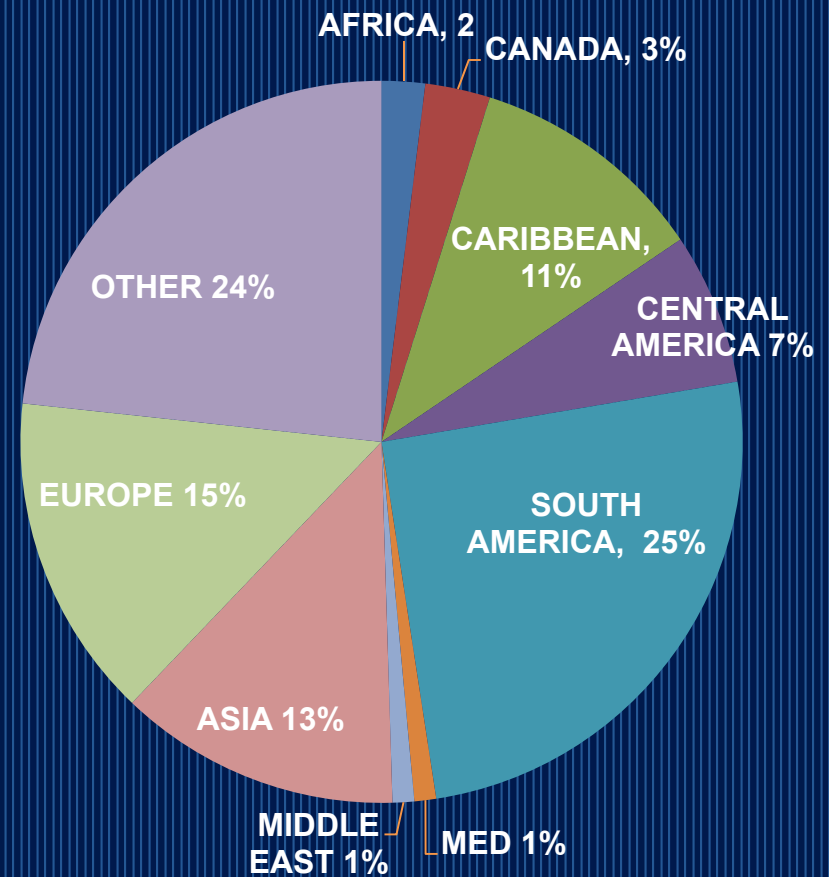
**CRUISE  
PASSENGERS**

# DIVERSIFIED GROWTH FOCUS

## COMMODITIES



## TRADE LANES





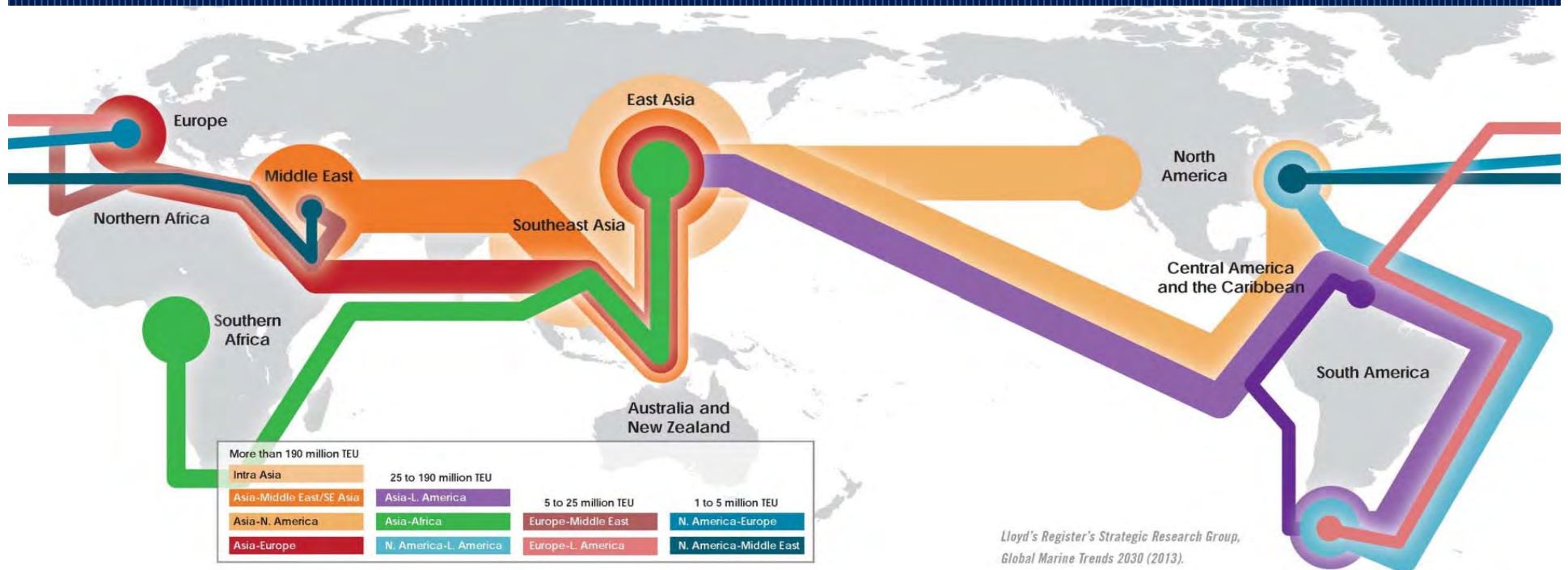
# FINANCIAL STABILITY

REVENUE GROWTH  
DEBT REPAYMENT  
CONTINUED REINVESTMENT



# GROWING CONTAINERIZATION

## CONTAINER TRADE VOLUMES BY 2030



# JAXPORT MAKES TOP 10 LIST OF FASTEST GROWING U.S. PORTS IN EXPORTING GOODS

By Drew Dixon, Reporter, Florida Times-Union, Thu, Sep 17, 2015

**JACKSONVILLE'S  
PORT IS RANKED IN  
THE TOP 10  
FASTEST-GROWING  
U.S. EXPORTING  
PORTS.**

**THE JOURNAL OF  
COMMERCE LISTED  
JAXPORT AS THE  
8TH FASTEST-  
GROWING PORT  
WHEN IT COMES TO  
SHIPPING GOODS  
OUT OF THE  
COUNTRY.**

**JAXPORT JOINS  
THREE OTHER  
FLORIDA PORTS ON  
THAT LIST OF  
NAUTICAL HUBS**



UNIVERSITY OF NORTH FLORIDA ECONOMIST PAUL MASON SAID HE'S NOT SURPRISED AT JAXPORT'S RANKING. "I THINK IT IS INDICATIVE OF A TREND," MASON SAID THURSDAY.



"THE JACKSONVILLE PORT HAS BEEN GAINING IN BUSINESS AND NOTORIETY AS A SOURCE PARTICULARLY BECAUSE OF THE IMPORTING AND EXPORTING OF AUTOMOBILES THAT GO THROUGH," ACCORDING TO PROFESSOR MASON.

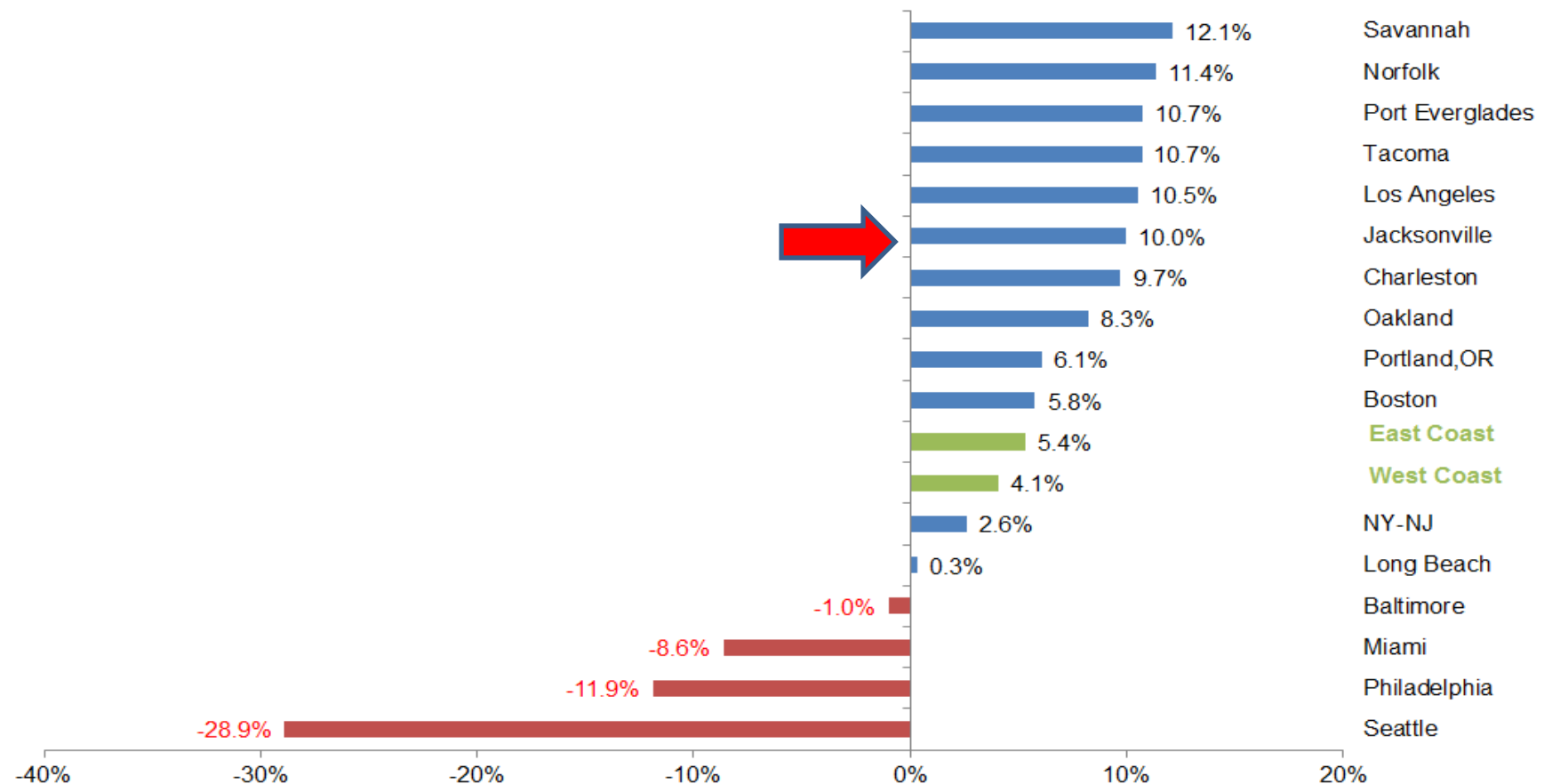


Source of Photos: Bruce Lipsky, Florida T-U

# CONTAINER GROWTH FOCUS

## Fastest-Growing U.S. Ports — First Half 2014

*Year-Over-Year Percent Change in Containerized Imports at Major U.S. Container Ports*



Source: PIERs, the Data Division of JOC Group Inc.



# WHAT OTHERS ARE SAYING

*Easiest port to do business with in the southern U.S.*

LOGISTICS MANAGEMENT

*Top 5 Logistics Metro in U.S.*

LOGISTICS TODAY

*No. 3 Foreign Trade Zone in the world*

fDi MAGAZINE

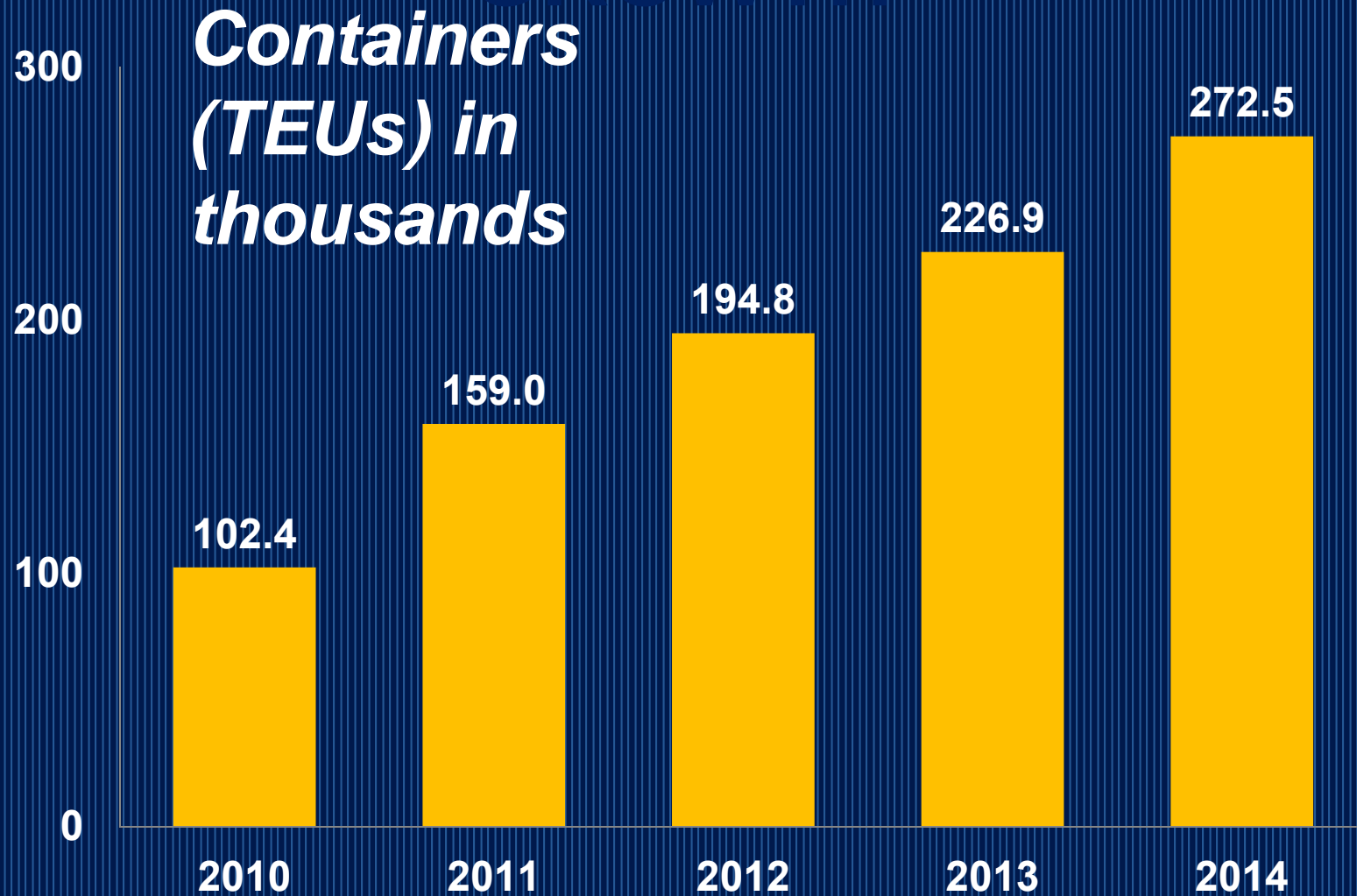
*UNF Transportation & Logistics program ranked #13 in U.S.*

SUPPLY CHAIN MANAGEMENT REVIEW

*One of America's 10 best cities for logistics infrastructure*

GLOBAL TRADE

# JAXPORT'S ASIAN CONTAINER GROWTH



# INCREASING IMPORTS





# OCEAN CARRIERS

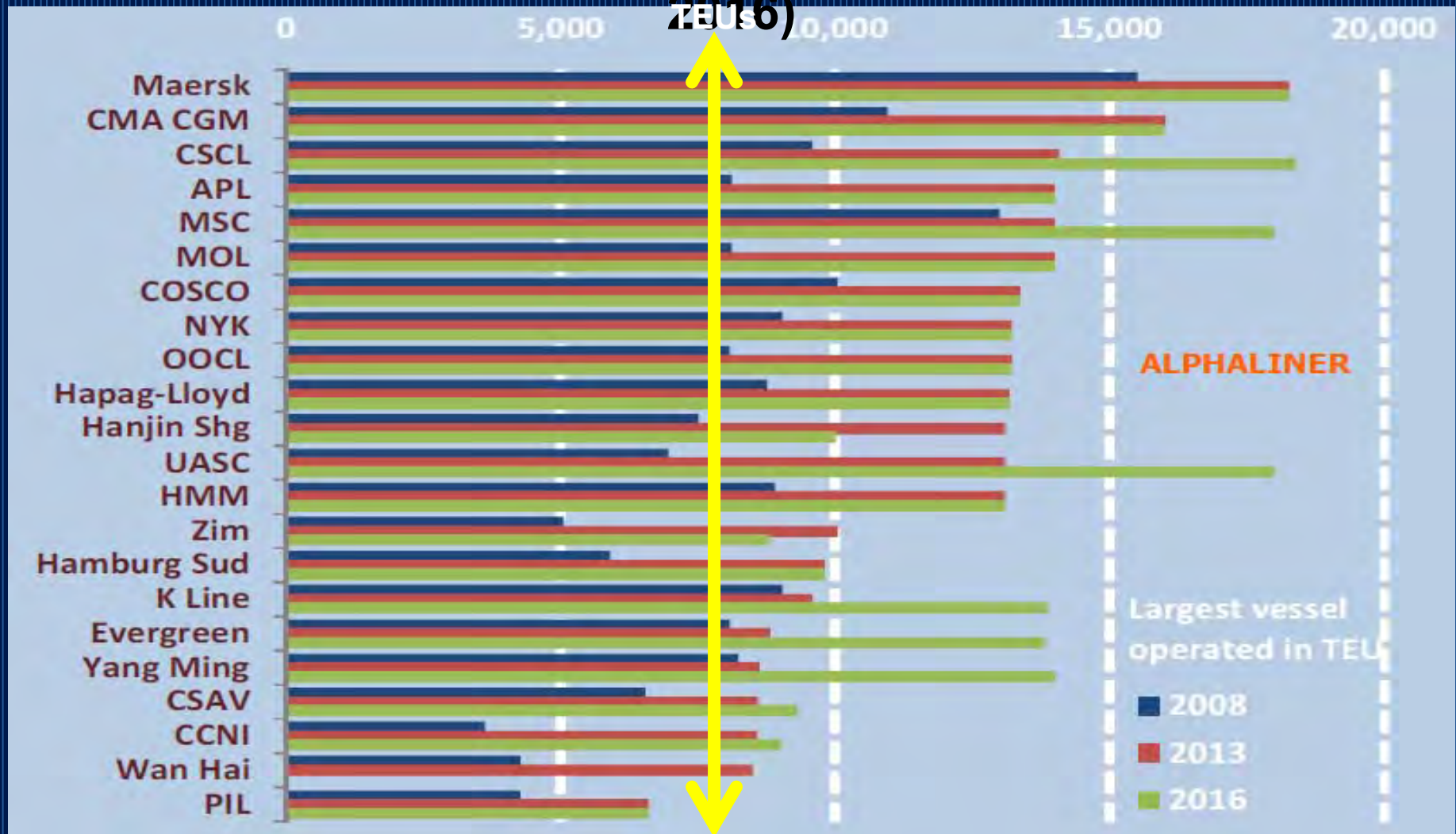
- *Aliança Lines, Inc.*
- *American Roll-on Roll-off*
- *APL*
- *ACL/Grimaldi*
- *Bahri*
- *China Shipping*
- *CMA CGM*
- *Crowley*
- *CSAV*
- *Eukor*
- *Evergreen*
- *Frontier Liner Services*
- *Galborg/Gulf Africa Line*
- *Great American Lines*
- *Grieg Star Shipping*
- *Hamburg Süd*
- *Hapag-Lloyd*
- *Höegh Autoliners*
- *Hyundai (HMM)*
- *“K” Line*
- *King Ocean Services*
- *Liberty Global Logistics*
- *Mediterranean Shipping Co.*
- *Mitsui O.S.K. Lines*
- *MOL (America)*
- *Nissan Motor Car Carrier*
- *NYK Group Ro/Ro*
- *NYK Line (NA)*
- *OOCL*
- *Sallaum Lines*
- *SeaFreight Agencies*
- *Sea Star Line*
- *Spliethoff/Balticarrier*
- *Trailer Bridge*
- *Transatlantic Line*
- *UASC*
- *US Lines*
- *WWL*
- *Zim*

# BIG SHIPS ARE HERE



*Stimulating new container  
growth*

# LARGEST SHIPS DEPLOYED BY CARRIER (2008, 2013, 2016)



SOURCE: SHIP MONITOR

**NOTE: 47' CHANNEL DEEPENING DESIGN VESSEL: SUSAN MAERSK, 8,680 TEUs**



# RO/RO HIGHLIGHTS



**VW Project**



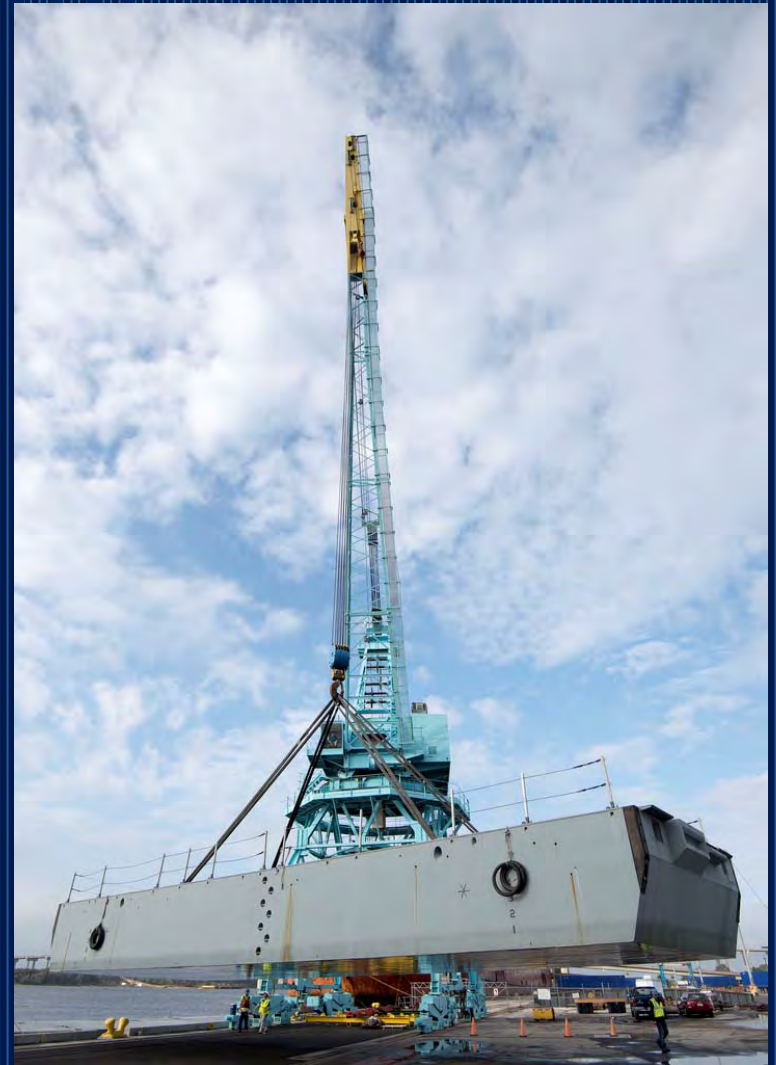
**New Product  
Launch**



**Military Support**



# BREAKBULK / PROJECT CARGO



# CHALLENGES

- CAPITAL INTENSIVE BUSINESS
- AGING INFRASTRUCTURE
- SHIFTING TRADE ENVIRONMENT
- PUBLIC FUNDING SHORTFALLS
- INCREASING VESSEL SIZE





# OPPORTUNITIES

- **MILITARY CARGO**
- **LNG** (LIQUEFIED NATURAL GAS)
- **AUTOS** (MEXICO)
- **CONTAINERS**
- **CARIBBEAN, CENTRAL  
AND SOUTH AMERICA**



# U.S. TRENDS

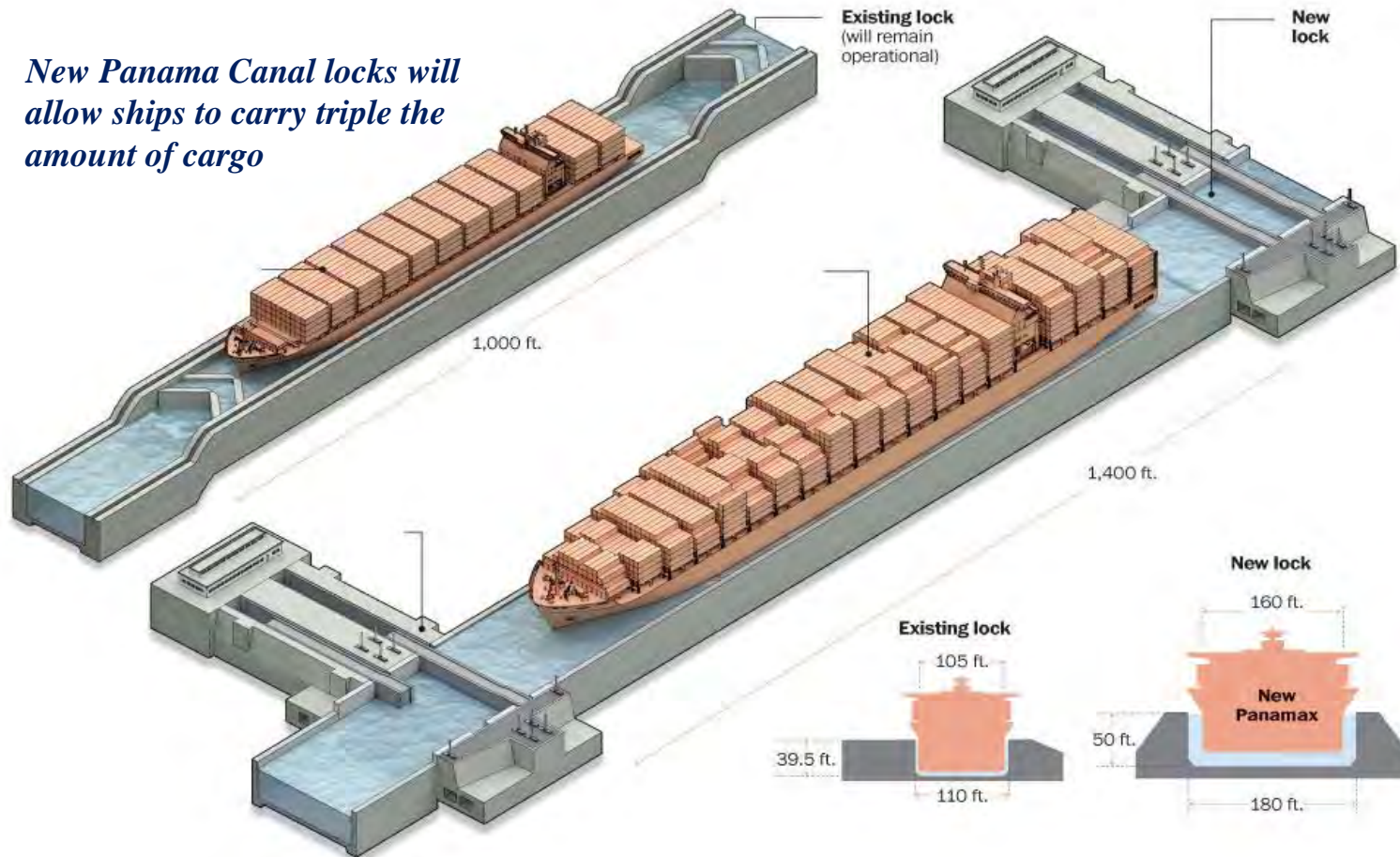


- Demand for direct service
- East Coast distribution centers
- Traffic via Suez Canal
- Southeast U. S. population
- Panama Canal ship size

# IMPACT OF THE EXPANDED PANAMA

## INCREASED CAPACITY

*New Panama Canal locks will allow ships to carry triple the amount of cargo*



SOURCE: NY TIMES

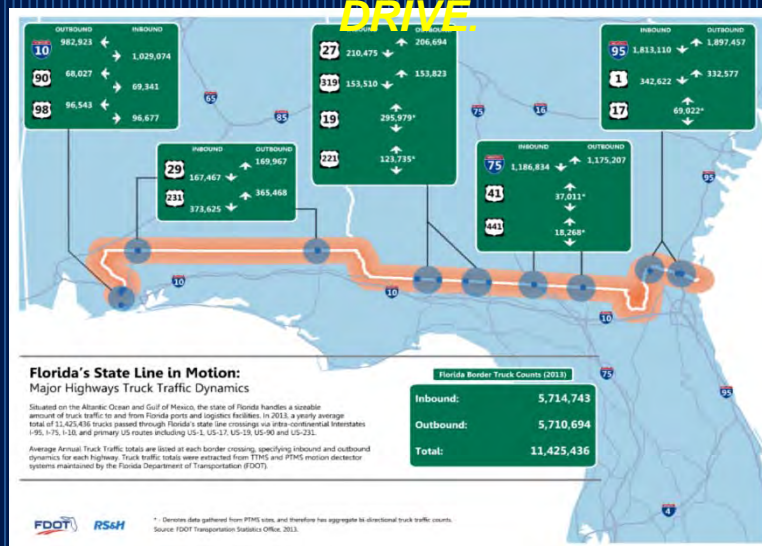


# "GATEWAY TO THE SOUTHEAST" .... "FRONT DOOR"

## JAXPORT AND NORTHEAST FLORIDA

JAXPORT ENJOYS A STRATEGIC ADVANTAGE GIVEN ITS LOCATION AT THE CONFLUENCE OF THREE MAJOR HIGHWAYS AND THREE MAJOR RAILWAYS.

**MORE THAN 60 MILLION CONSUMERS ARE LOCATED WITHIN A ONE-DAY TRUCK DRIVE.**



**INTERSTATE 95**  
4.4 m Trucks/YR

**INTERSTATE 75**  
2.4 m Trucks/YR



# STATE ECONOMIC IMPACT

## NE FLORIDA KEY FACTS:

### Economic performance rankings

#### 2011–2012 258th

GDP per cap. change (%): -0.8  
Employment change (%): +0.5

#### 2007–2011 (min. year) 276th

GDP per cap. change (%): -6.5  
Employment change (%): -5.7

#### 1993–2007 108th

GDP per cap. change (%): +2.0  
Employment change (%): +2.5

Jacksonville is currently in a partial recession with a decline in either employment or GDP per capita.

It is lagging the United States on both employment and GDP per capita change.

### Industrial Structure

Share of metro area output by industry (2012):

▪ Business/Finance	29.1%
▪ Commodities	0.4%
▪ Construction	3.8%
▪ Manufacturing	5.4%
▪ Local/Non-Market	39.8%
▪ Trade and Tourism	16.6%
▪ Transportation	4.4%
▪ Utilities	0.6%



**680,000**

**JOBS SUPPORTED BY  
FLORIDA SEAPORTS**

**\$96 BILLION**

**FLORIDA SEAPORTS  
ECONOMIC ACTIVITY IN THE  
STATE**



# REGIONAL ECONOMIC IMPACT

## JACKSONVILLE'S PORT COMPLEX

#1 CONTAINER PORT IN  
FLORIDA

#1 VEHICLE EXPORTER PORT  
IN U.S.

65,000

#2 BULK PORT IN FLORIDA  
JOBS

SUPPORTED

EXPORT

\$19 BILLION

ACTIVITY

ANNUAL ECONOMIC

IMPACT







# IMPROVING PORT EFFICIENCY IS CRITICAL

**...BUT CHANNEL DEEPENING**



**1 - DEEPER  
CHANNELS &  
BERTHS PLUS  
DMMAs,  
ODMDSs**



**2 - POST-PANAMAX SHIPS  
AND  
ELECTRIC GANTRY CRANES TRANSFER FACILITIES /  
OTHER NEAR DOCK  
FACILITIES & EQUIPMENT**



**3 - INTERMODAL  
CONTAINER  
TRANSFER FACILITIES /  
OTHER NEAR DOCK  
FACILITIES & EQUIPMENT**



**4 - INTERSTATE AND  
HIGHWAY ACCESS**



**5 - DISTRIBUTION CENTERS,  
WAREHOUSES,  
MANUFACTURING AND  
FOREIGN  
TRADE ZONES**



**6 - WATERSIDE /  
ON-DOCK  
INFRASTRUCTURE**



**7 - RAIL LINE LOADING,  
CONNECTIVITY AND  
SUPPORTING  
INFRASTRUCTURE**



**8 - IMPROVED TRAFFIC  
FLOW/ CONTROLS, GATE  
COMPLEXES &  
AUTOMATED TERMINAL  
OPERATING SYSTEMS /  
SECURITY UPGRADES**



**9 - SUPPORT AREAS, FUEL  
STORAGE YARDS & TANKS  
AND LNG FUEL FARMS**



**10 - AIDS TO NAVIGATION  
(PORTS, SOLAS,  
eHydro GIS, eMIS, etc.)**



# JAXPORT'S FUTURE – AUTOMATION?

***TO GET THERE – NEED ADDITIONAL FUNDING  
FOR...***



**11 - MORE PLANNING &  
ENGINEERING CONSULTING  
SUPPORT**



**12 - “STATE OF THE ART”  
SIMULATION & EMULATION**



**13 - IMPROVED FLEET  
MANAGEMENT AND IMPROVED  
TERMINAL YARDS AND GATE  
PROCESSING**



**14 - BATTERY-DRIVEN  
CONTAINER TRANSPORT  
VEHICLES**



**15 - LIFT AUTOMATED GUIDE  
VEHICLES (AGV)**



**16 - YARD RAIL MOUNTED  
GANTRY (RMG) / AUTOMATED  
STACKING CRANES (ASC)**



# BALANCING GROWTH & THE ENVIRONMENT





# JAXPORT'S INFRASTRUCTURE RE INVESTMENTS



# JAXPORT INVESTMENTS

***MORE THAN \$660 MILLION SINCE  
2010***

**UNDER  
CONSTRUCTION**



**\$150M**

**INFRASTRUCTURE  
IMPROVEMENTS  
@ BIMT & TMT**

**UNDER  
CONSTRUCTION**



**\$30M**

**ICTF  
@ DAMES  
POINT**

**UNDER  
CONSTRUCTION**



**\$38M**

**3 NEW 100'  
GAUGE  
GANTRY  
CRANES**

**BEGIN  
CONSTRUCTION  
OCT 2015**



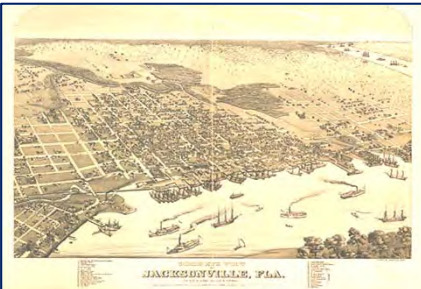
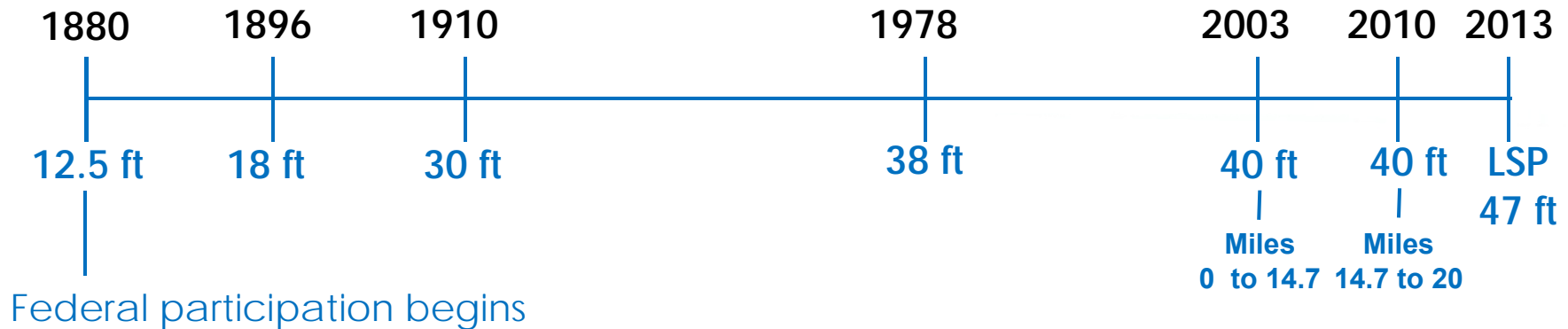
**\$43M**

**MILE POINT  
IMPROVEMENT**

***BUT MORE IS NEEDED!!!***

# JACKSONVILLE HARBOR

## *THE DEEPENING HISTORY*



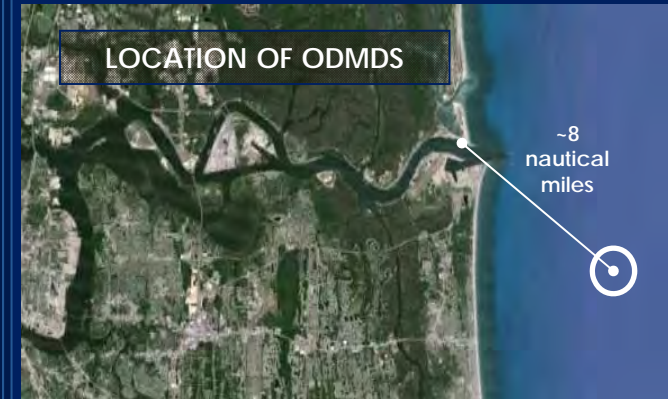
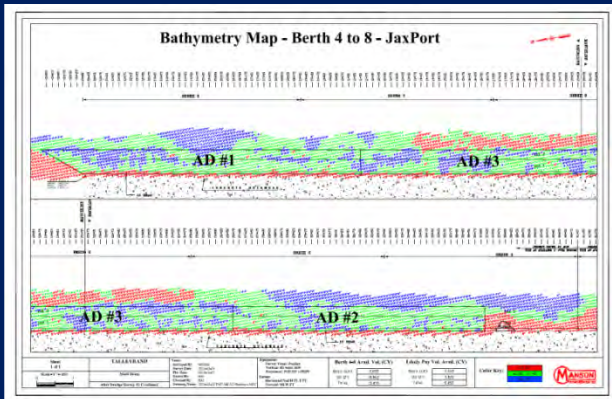
Slide courtesy of USACE



10/7/2015



# 1 - DEEPER CHANNELS & BERTHS (INCLUDING O&M DREDGING, DMMAs, ODMDS)





# JAXPORT'S IMMEDIATE PRIORITY ELIMINATE MILE POINT RESTRICTIONS <sup>~\$43M</sup>

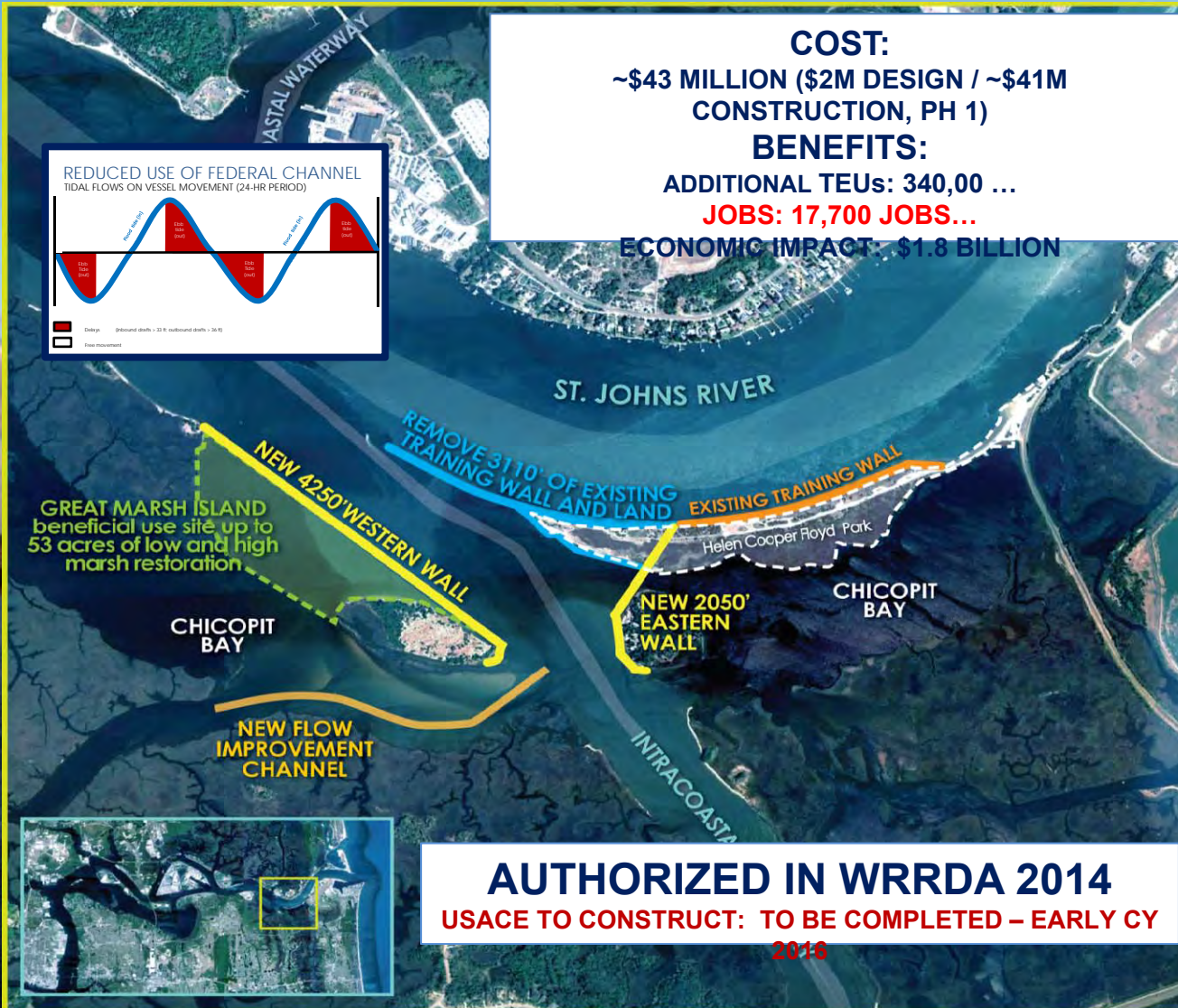
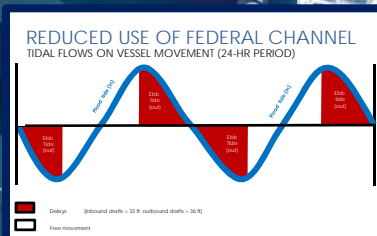
## RECOMMENDED PLAN (RELOCATION OF THE MILE POINT TRAINING WALL)

-  EXISTING TRAINING WALL
-  TRAINING WALL REMOVAL
-  NEW TRAINING WALL
-  GREAT MARSH ISLAND RESTORATION
-  FLOW IMPROVEMENT CHANNEL



SLIDE COURTESY OF USACE

**COST:**  
~\$43 MILLION (\$2M DESIGN / ~\$41M CONSTRUCTION, PH 1)  
**BENEFITS:**  
ADDITIONAL TEUs: 340,00 ...  
**JOBS: 17,700 JOBS...**  
**ECONOMIC IMPACT: \$1.8 BILLION**




**AUTHORIZED IN WRRDA 2014**  
USACE TO CONSTRUCT: TO BE COMPLETED - EARLY CY 2018



# JAX HARBOR DEEPENING 47' PLAN

 **DEEPENING:**  
ENTRANCE CHANNEL TO ~ RIVER MILE 13  
FROM EXISTING 40-FOOT DEPTH TO 47 FEET

 **WIDENING:**  
AREAS 1 AND 2: ~ 100 TO 300 FEET

 **NEW TURNING BASINS:**  
BLOUNT ISLAND: ~ 2700' LONG BY 1500' WIDE  
BASIN BRILLS CUT: ~ 2500' LONG BY 1500' WIDE

**PROJECTED JOBS GROWTH  
AND  
ECONOMIC IMPACTS  
REPRESENT  
MINIMAL ECONOMIC  
AND  
ENVIRONMENTAL RISKS**



# HARBOR DEEPENING ROI

BLOUNT ISLAND

ICTF

DAMES POINT

TRAPAC

**13,844**

JOBS: Direct, Indirect, Induced

**1.95 million**

TEUs: Twenty-foot equivalent units

**\$1 invested = \$14.80**

RETURNED TO THE ECONOMY



# JAX HARBOR DEEPENING 47' PLAN

## KEY SCHEDULE DATES:

DESIGN AGREEMENT SIGNED INITIATING PED PHASE	MAY 2014
PED SIGNING CEREMONY	JUN 2014
GEO-TECH TESTING (CORES):	JUN 2014 –
JAN 2015	
ENVIRONMENTAL TESTING:	JUN 2014 – FEB 2015
BANK TO BANK SURVEY:	JUN 2014 –
SEP 2014	
INITIATE PLANS/SPECS:	JAN 2015
PED PHASE CONTRACT A ENDS	NOV 2015
USEPA APPROVES ODMDS / PUBS DECISION IN FEDERAL REGISTER	NOV 2015
FDEP ISSUES PERMIT	NOV 2015
PLANS/SPECS CERTIFIED:	JAN 2016
PPA APPROVED BY JAXPORT BOARD	MAR 2016
READY TO ADVERTISE: (NON-FED STATE AND LOCAL FUNDS NEEDED NLT)	APR 2016
DREDGING CONTRACT A ADVERTISED:	APRIL 2016
CONTRACT A BIDS RECEIVED:	JUN 2016
SOURCE SELECTION COMMITTEE EVALUATES BIDS	JUN 2016
AWARD CONTRACT A:	JUL 2016
NTP ISSUED:	AUG 2016
CONTRACTOR MOBILIZES	SEP 2016
CONSERVATION LAND PURCHASED	*
CONSTRUCTION CONTRACT A COMPLETE	JAN 2019

# JAXPORT O&M DREDGING

ANNUAL PROJECTED DREDGING QUANTITIES  
POST-GRR2 HARBOR DEEPENING PROJECT: ~1.2 M  
CYs

(INCLUDES BOTH FEDERAL AND LOCAL SPONSOR REQUIREMENTS COMBINED)

**U.S. ARMY CORPS OF ENGINEERS**

FY 2014 – 2015 O&M DREDGING CONTRACT PENDING

BID OPENING: SEP 12, 2014

AWARD: SEP 30, 2014

(FEDERAL CHANNEL O&M REQUIREMENTS ONLY)



# JACKSONVILLE HARBOR FEDERAL CHANNEL ANNUAL O&M DREDGING

- USACE UTILIZING BUCK ISLAND, CELL A FOR DMMA DISPOSAL
  - FY 2015 DREDGING PROGRAM FOCUS: ~MILE 1 – MILE 9
    - ADVERTISED: JULY 2014
      - AWARDED: SEP 2014
- CONTRACTOR: GREAT LAKES DREDGING
  - NTP ISSUED: OCT 2014



# DREDGE MATERIAL MANAGEMENT AREA OPERATIONS

BARTRAM ISLAND  
CELL A & B2 DIKE RAISING (35' TO  
55')  
ST. JOHNS RIVER  
USACE PROJECT

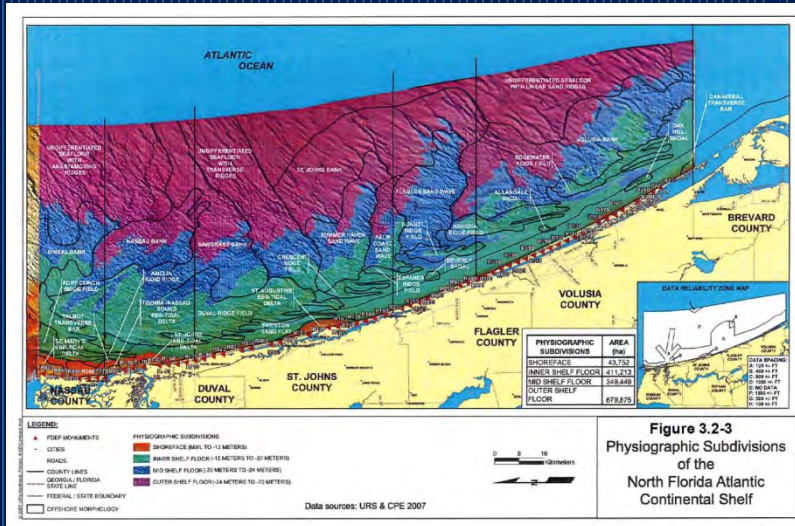
**DONE**

## BARTRAM ISLAND PROJECT SUMMARY

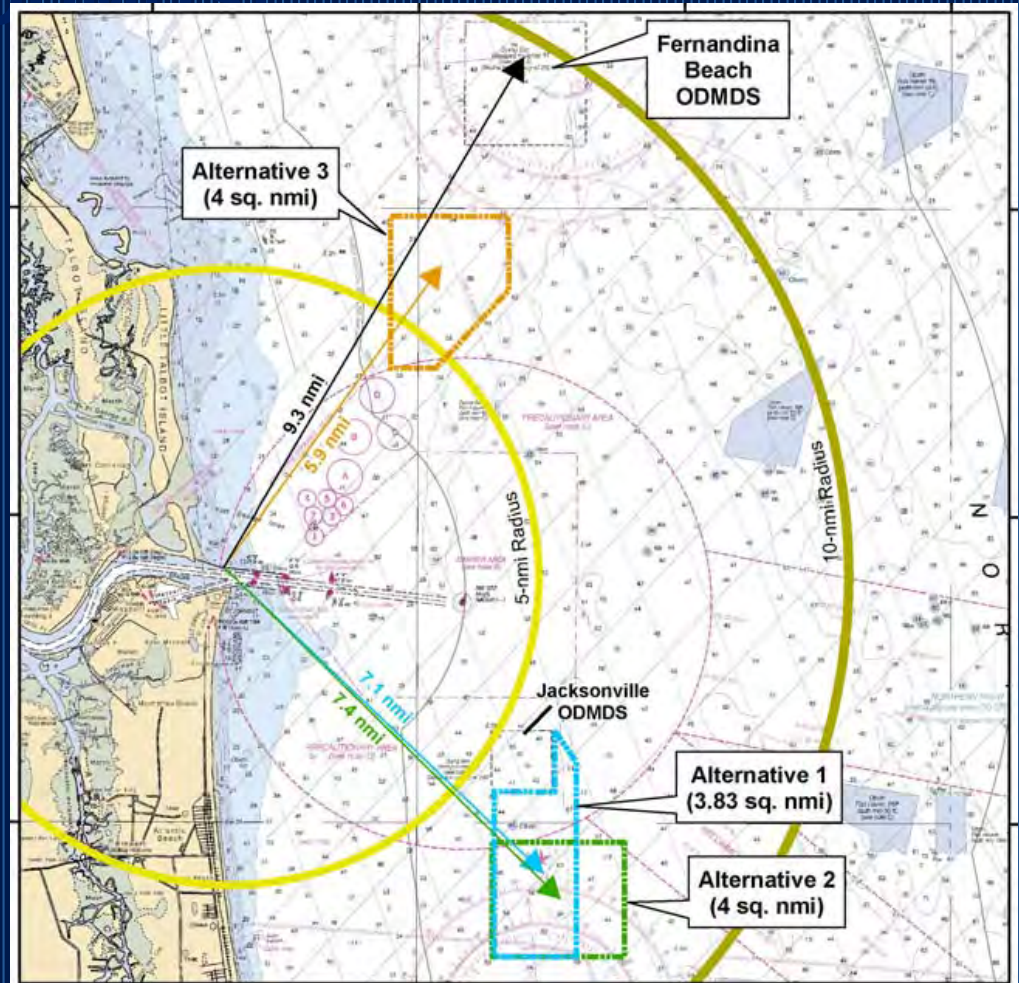
- PROJECT 100% COMPLETE MAY 2014
- PROJECT INCLUDED :
  - "FLOATING" WEIR SYSTEM AND
  - CREATION OF TWO "CELLS" ON A 216-ACRE ISLAND
  - CELLS HOLD MORE THAN 12 MILLION YARDS OF DREDGED MATERIAL
- TOTAL PROJECT COST: \$ 29M



# JACKSONVILLE HARBOR OCEAN DREDGE MATERIAL DISPOSAL SITE



- **CRITICAL FOR 47' DEEPENING PROJECT**
- **ON TRACK FOR EPA APPROVAL NOV 2015**





## 2 - NEW POST-PANAMAX





# 3 EA. NEW 100' GAUGE, ELECTRIC CRANES



CHANGXING ISLAND, CHINA  
SEPTEMBER 2015

# NEW (3 EA.) 100 GAUGE, ELECTRIC CRANES

\* TRANSIT TIME ASSUMES CRANES WERE CONSTRUCTED AND SHIPPED FROM CHINA

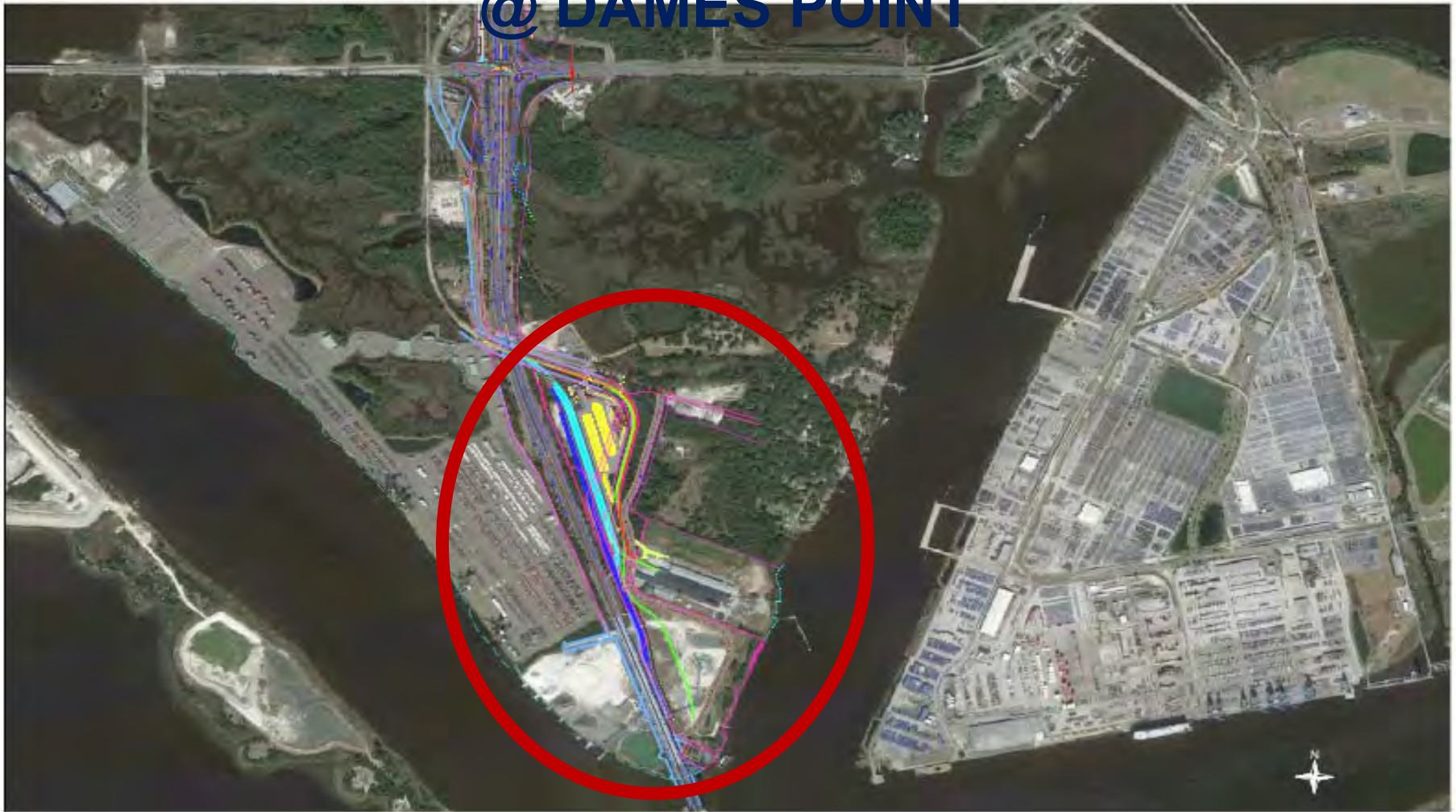
- ✓ **ADVERTISED** **CURRENT SCHEDULE** **MAY 16, 2014**
- ✓ **BID OPENING** **JUL 08, 2014**
- ✓ **CONTRACT AWARDED TO ZPMC** **SEP 26, 2014**
- ✓ **NTP ISSUED /DESIGN STARTED (~6 MOS)** **NOV 7, 2014**
- ✓ **MANUFACTURE/CONSTRUCTION STARTS** **~MAR 01, 2015**
- ❑ **CRANES COMPLETED; READY FOR LOADING** **~MAR , 2016**
- ❑ **CRANES LOADED: BEGIN TRANSIT TO U.S.\*** **~APR . 2016**





# 3 - INTERMODAL CONTAINER TRANSFER FACILITY (ICTF)

@ DAMES POINT



# ICTFs AND DOCK SIDE OFF-LOADING FACILITIES



**RAIL YARD SITE PREPARATIONS UNDERWAY**  
**(SEP 2015)**



# 4 - HIGHWAYS, ROADS AND RAILS INVESTMENTS

- *FDOT has invested more than **\$1.2 billion** in the design and construction of transportation improvements for Northeast Florida over the past five years.*
- *Improvements include: preservation projects, milling, resurfacing roadways, bridge repairs and replacements, highway work, etc.*



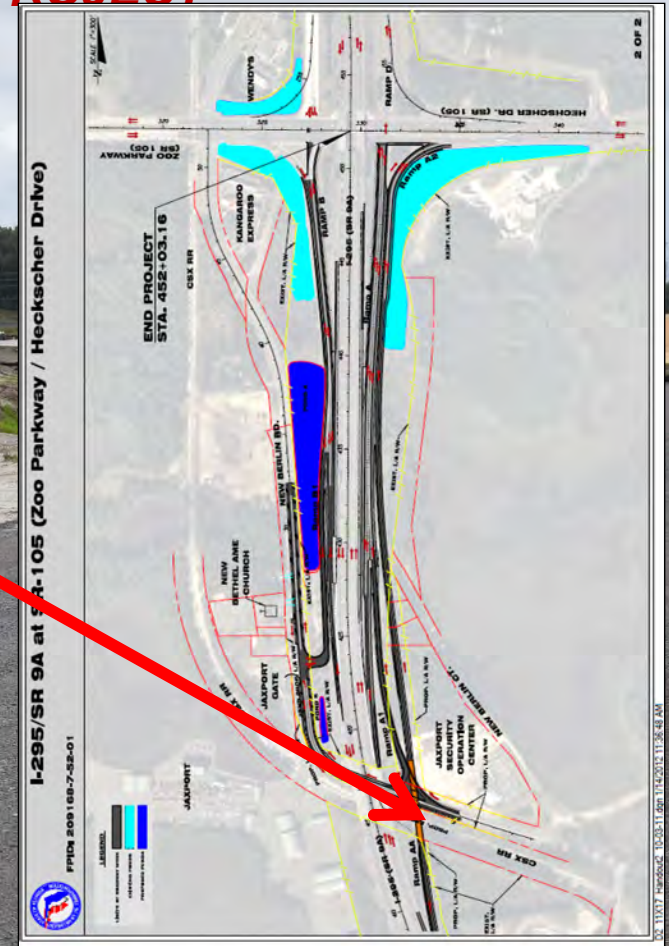
# ROAD INVESTMENTS

Talleyrand  
d  
Marine  
Terminal

Martin Luther King Expressway  
and Phoenix Avenue  
Interchange Improvement  
Project



## INTERSECTION IMPROVEMENT PROJECT



**NEW I-295 NORTHBOUND EXIT RAMP CONSTRUCTION UNDERWAY**  
**(SEP 2015)**



## 5 - DISTRIBUTION CENTERS, REGIONAL LOGISTICS PARKS, WAREHOUSES, MANUFACTURING AND FOREIGN TRADE ZONES





# DISTRIBUTION CENTERS

1. CECIL COMMERCE CENTER
2. WEST LAKE INDUSTRIAL PARK DRI
3. WESTSIDE INDUSTRIAL PARK (PATTILLO)
4. CSX RAIL RAMP
5. NS RAIL RAMP
6. CROSSROADS DISTRIBUTION CENTER
7. WESTJAX INDUSTRIAL DISTRICT
8. PERIMETER WEST
9. IMESON INDUSTRIAL PARK DRI
10. JACKSONVILLE INT. TRADEPORT DRI
11. PECAN PARK DISTRIBUTION CENTER
12. NORTH POINT INDUSTRIAL PARK
13. ALTA LAKES COMMERCE CENTER
14. NORTHPORT LOGISTICS CENTER
15. FEC RAIL RAMP
16. SOUTHPOINT
17. DEERWOOD



# DISTRIBUTION CENTERS

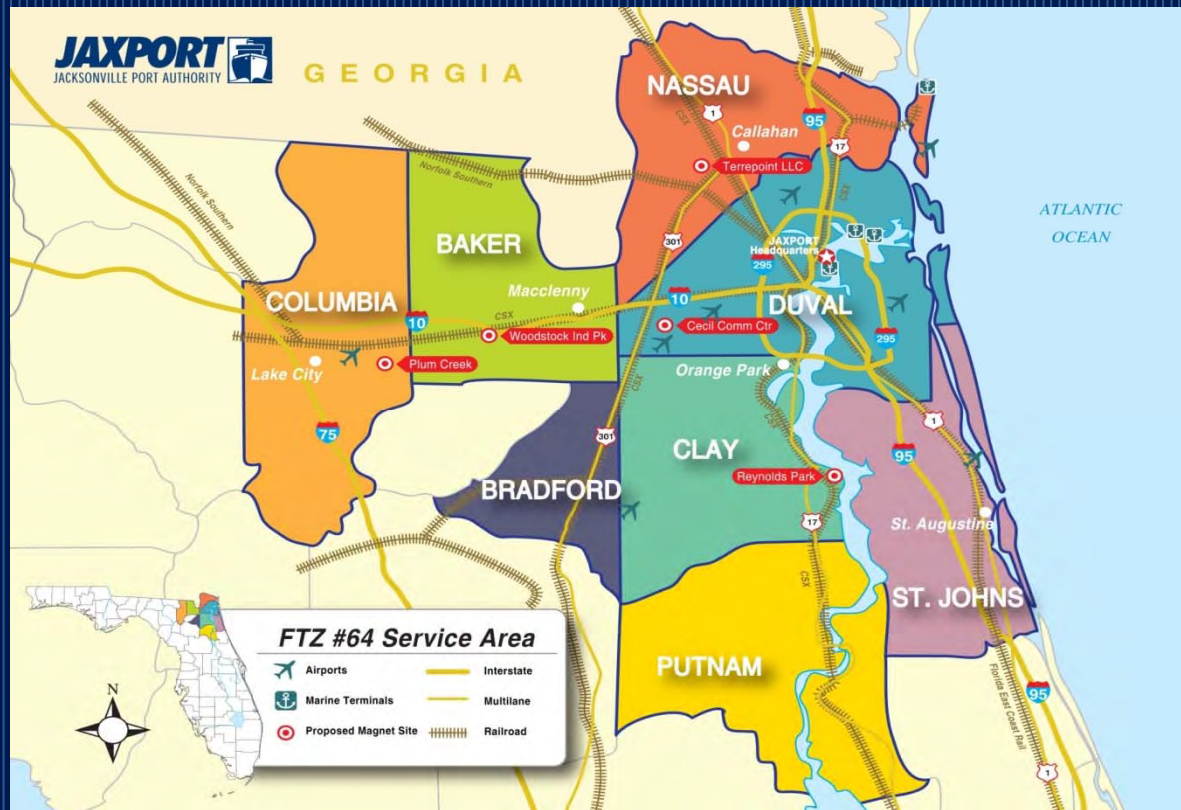
## EXPANDING IN JACKSONVILLE

*A SAMPLE OF THE COMPANIES EXPANDING THEIR DISTRIBUTION OPERATIONS IN JACKSONVILLE:*





# FOREIGN TRADE ZONES



## FOREIGN TRADE ZONE

- **FTZ #64** *may be activated throughout NE Florida*
- *Defer U.S. duty payments until goods leave the FTZ*
- *No duty due on re-exported goods*
- *Preferential duty rates for manufacturing*

# REGIONAL LOGISTICS PARKS

(FKA INLAND PORTS)

## INLAND PORTS:

Linking Freight and Regional  
Economic Development



NADO RESEARCH FOUNDATION  
Center for Transportation Advancement and Regional Development  
with support from the Federal Highway Administration

### PURPOSE:

- LEVERAGE REGIONAL RAIL LINES CONNECTIVITY (NS, CSX, FECR LINES) AND DELIVERY SPEED
- PROMOTE INTERMODAL CONTAINER GROWTH AND EFFICIENCY
- IMPROVE CONNECTIVITY AND SERVICE TO WEST, CENTRAL AND SOUTH FLORIDA
- REDUCE TRANSPORTATION COSTS/RATES
- CONSOLIDATE WAREHOUSING REQUIREMENTS INTO LARGER HUBS AND BETTER SERVICE RETAILERS AND THEIR CUSTOMERS

### BENEFITS:

- IMPROVES INTERMODAL CONNECTIVITY
- INCREASES PORT PRODUCTIVITY
- REDUCES AIR EMISSIONS AND TRUCK TRAFFIC
- ELIMINATES DOWNTOWN RAIL CONGESTION / DELAYS
- ATTRACTS MAJOR PRIVATE INDUSTRIAL & MANUFACTURING SECTOR INVESTMENTS
- GROWS “HINTERLAND” REACH OF PORT AND ITS CUSTOMER BASE



# LABOR ADVANTAGES

- *Right-to-work state*
- *High productivity*
- *Stable labor situation*
- *3,000 military personnel separations each year*



# 6 - WATERSIDE & ON-DOCK INFRASTRUCTURE

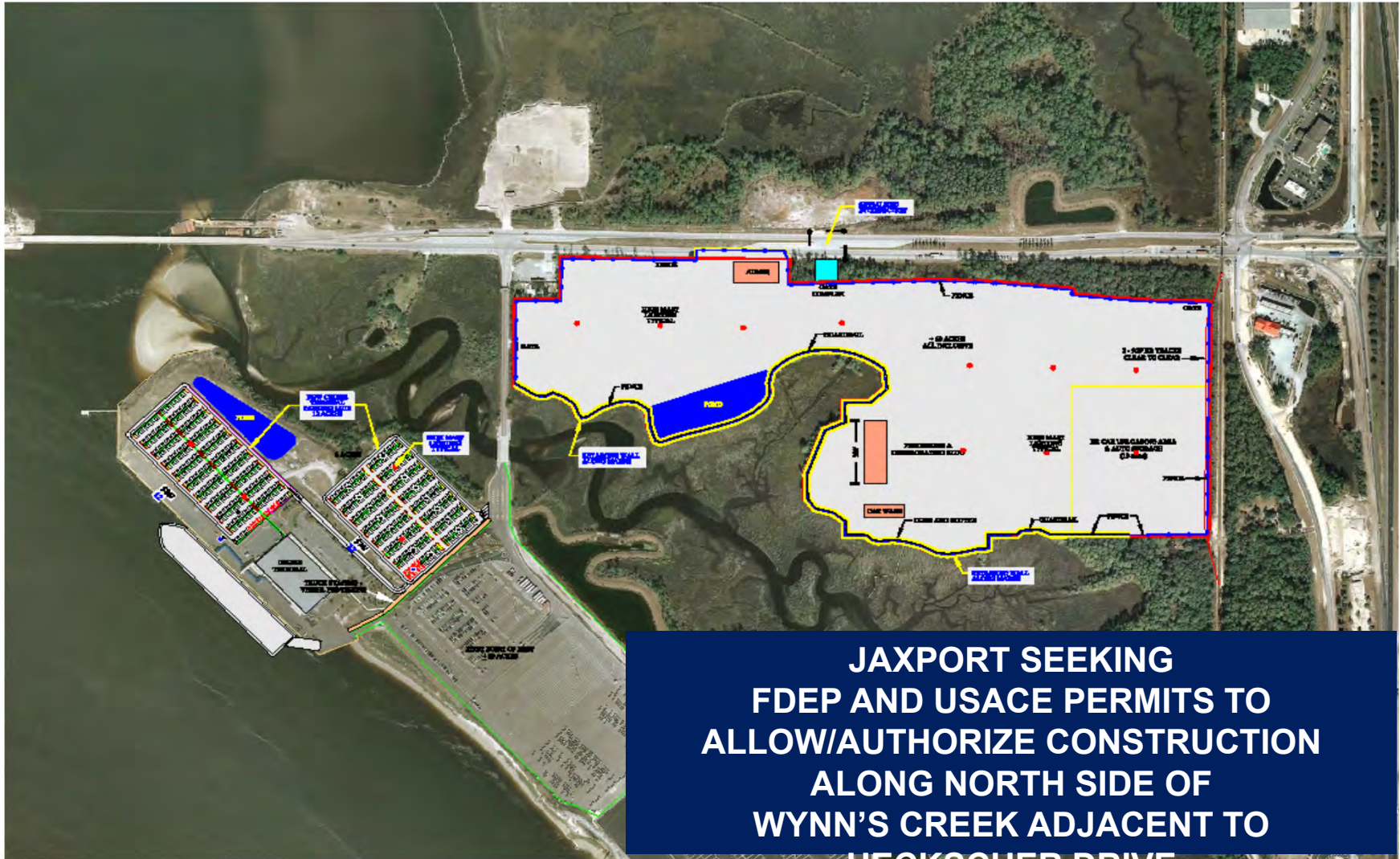


**BERTH IMPROVEMENTS  
COMPLETED BY  
FY 2019**



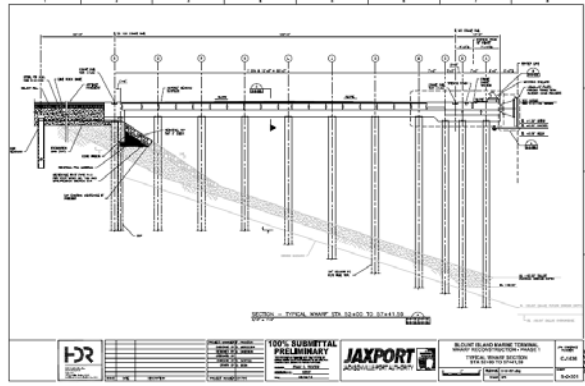


# DPMT NEAR DOCK INFRASTRUCTURE



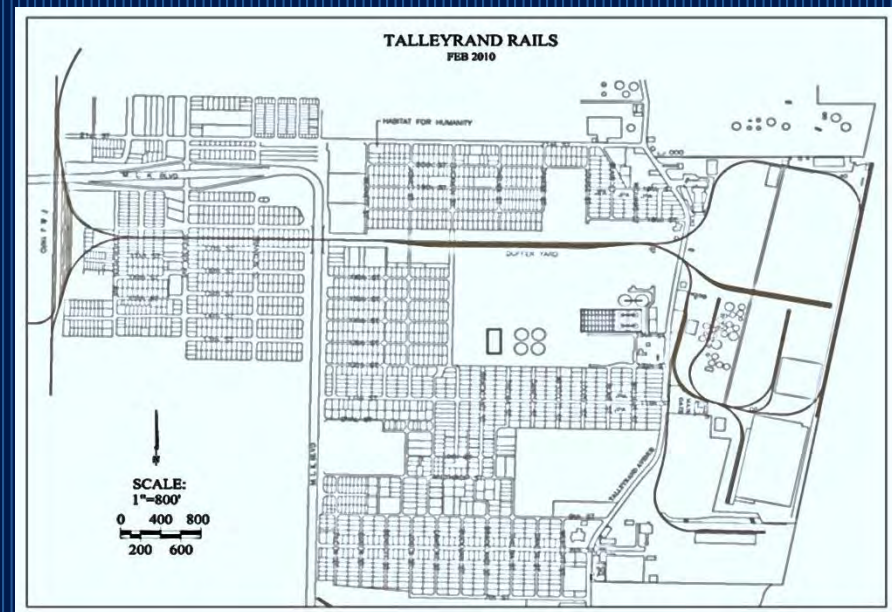
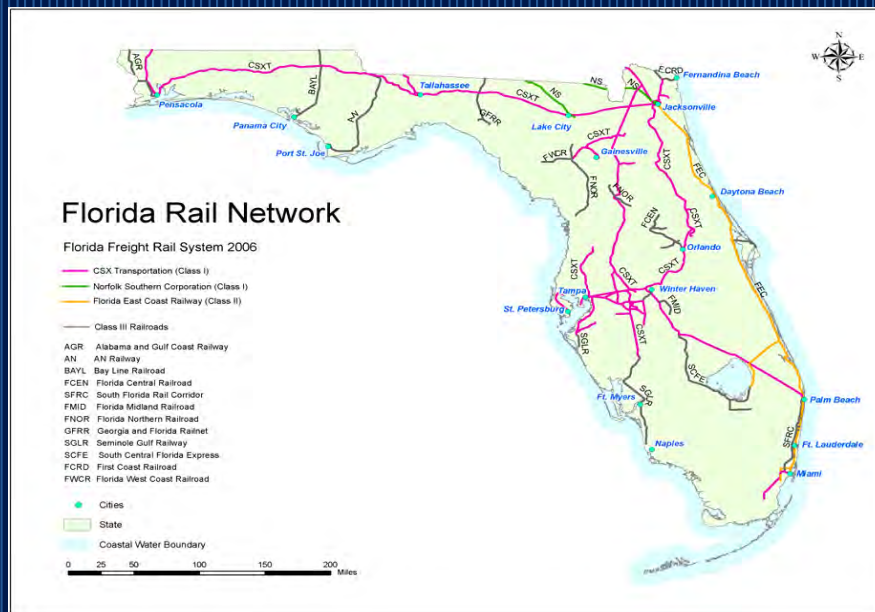


# BIMT BERTH 35 REHAB/REBUILD





# 7 - RAIL LINE LOADING





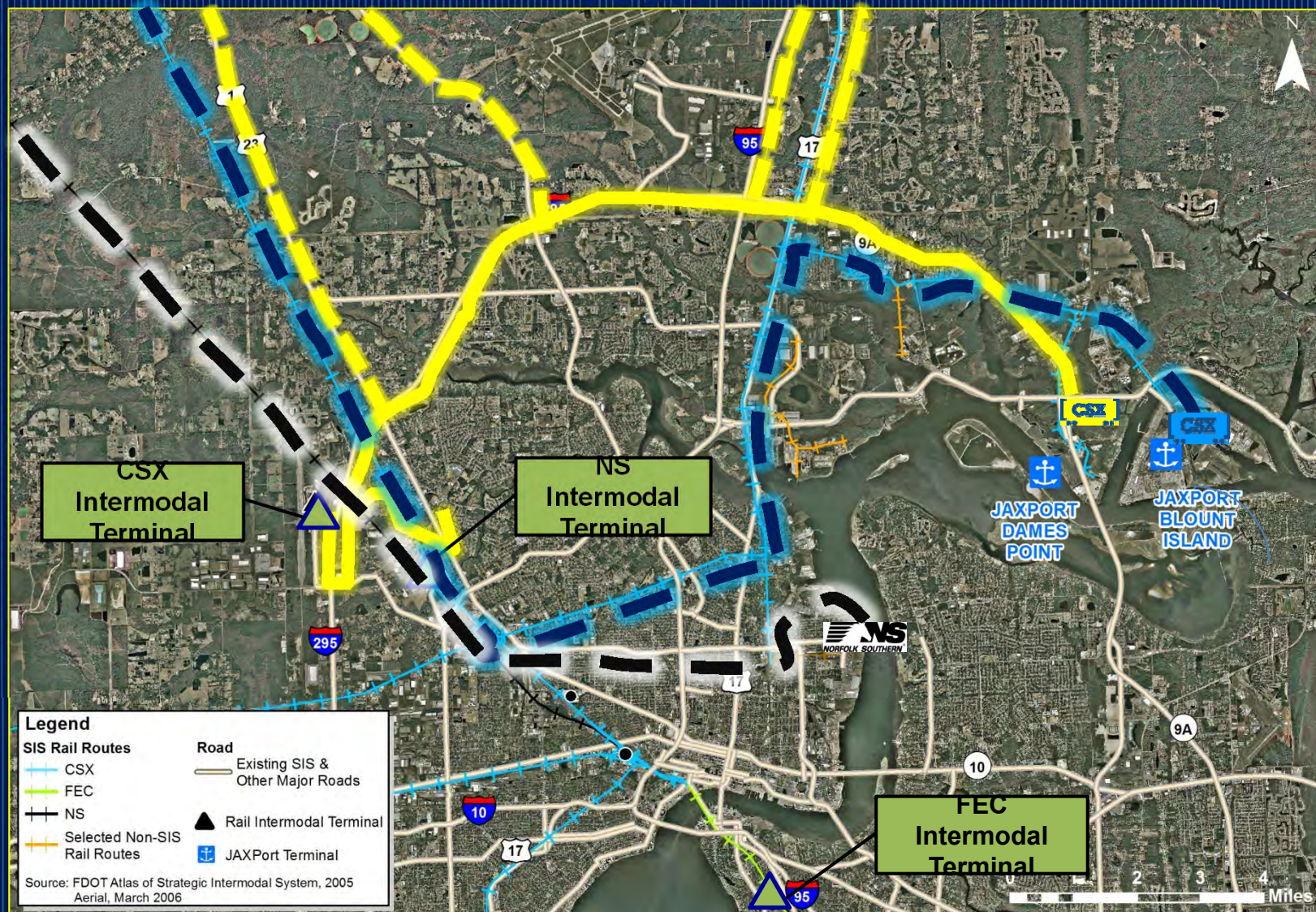
# RAIL & RO/RO BUSINESS INVESTMENTS

*REBUILT RAIL AT BLOUNT ISLAND AND TALLEYRAND MARINE  
TERMINALS PROVIDE FAST ACCESS FOR SHIPPERS*



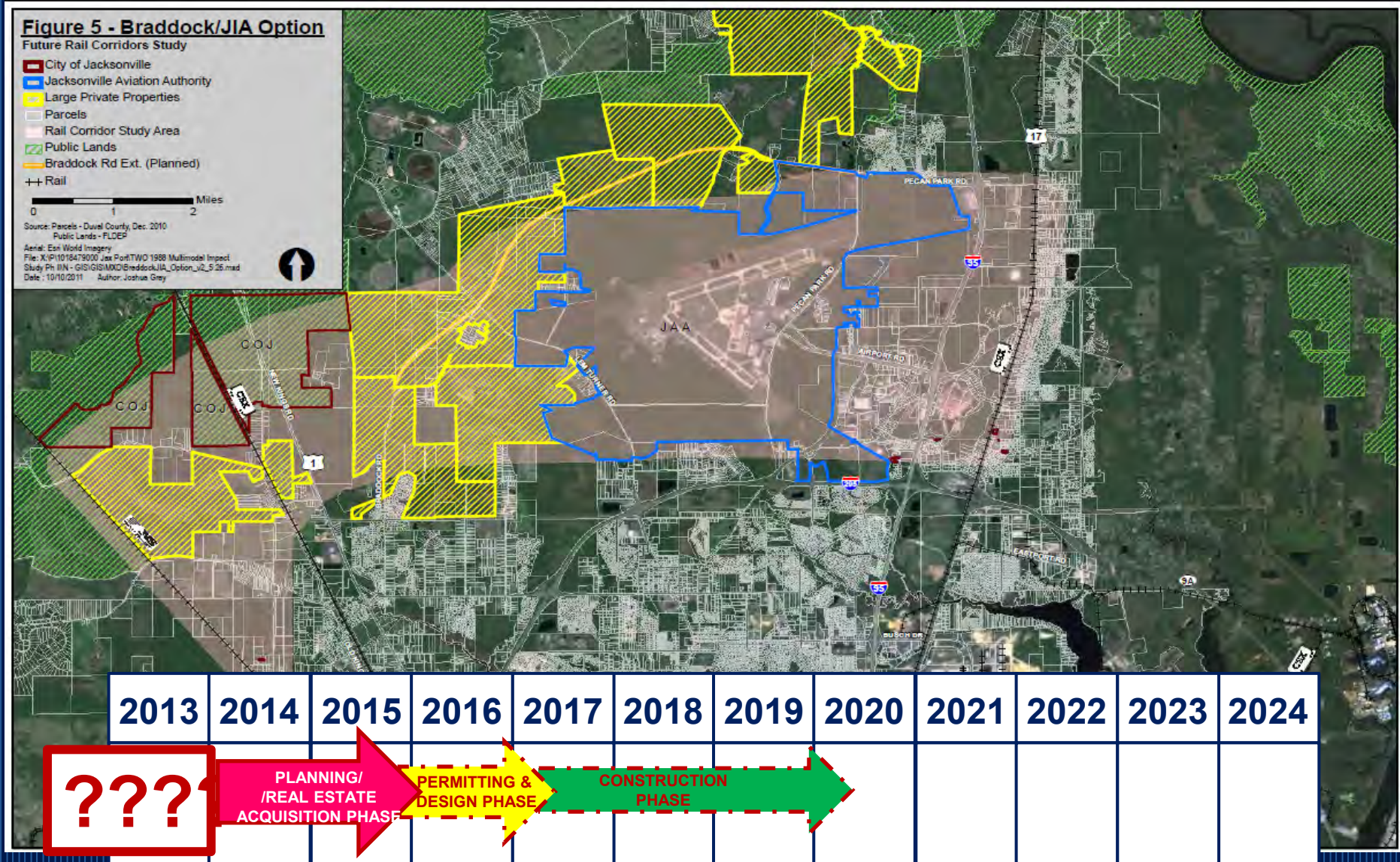


# Existing Container Route (Trucks & Rail)





# NORTH JACKSONVILLE RAIL CORRIDOR





# NORTH JACKSONVILLE RAIL CORRIDOR



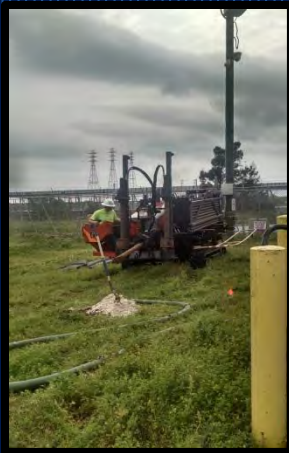
## 8 - TRAFFIC FLOW/ CONTROL, GATE COMPLEXES & TOS / SECURITY UPGRADES





## 8 - TRAFFIC FLOW/ CONTROL, GATE COMPLEXES &

### PORT SECURITY UPGRADES



## 9 - SUPPORT AREAS, STORAGE YARDS & STORAGE TANKS





# EMERGING INVESTMENT

## JACKSONVILLE PORT UNFUNDRAISER IN LNG



TOTE

EAGLE  
LNG

JAXPORT

JAX  
LNG

CROWLEY

The LNG  Bullseye is Centered  
Over JAXPORT



# JAXPORT & LNG TERMINALS



**EAGLE  
LNG**

**JAX  
LNG**



**BLOUNT ISLAND MARINE  
TERMINAL**

**DAMES POINT MARINE  
TERMINAL**

**TALLEYRAND MARINE  
TERMINAL**

*Atlantic Ocean*

**CECIL  
COMMERCE  
CENTER**



# TOTE LNG VESSELS TO BE HOMEPORTED

**APRIL 18, 2015**

**TOTE, INC. AND SHIPBUILDER GD NASSCO CELEBRATED THE LAUNCH AND CHRISTENING OF *ISLA BELLA*, THE WORLD'S FIRST LIQUEFIED NATURAL GAS-FUELED CONTAINER SHIP AND THE LARGEST DRY CARGO SHIP OF ANY KIND**

**POWERED BY LNG IN SAN DIEGO, CA.**



**Vessel 'Godmother' Sophie Sacco christened the ship with the traditional bottle of champagne shortly after 9:00pm as GD Nassco president Fred Harris looks on.**

**PHOTOS COURTESY GD NASSCO**



**ISLA BELLA AND TOTE II (LAUNCHED IN AUG 2015)**



**ISLA BELLA LAUNCH, APRIL 18, 2015**



# CROWLEY MARITIME LNG POWERED VESSELS & SHIPPING



**Keel Laid for Crowley's First LNG-Powered Ship**



## **Crowley Gets Ready for LNG at JAXPORT**

February 25, 2015 in *HHPInsight* by Rich Piellisch

### ***New Equipment Is Rolling In, Port Is Pleased with Lease Expansion***

- Crowley Maritime is talking up delivery of new equipment to the Port of Jacksonville, where the firm will base two liquefied natural gas-fueled ships to serve its Puerto Rico routes.
- The influx of new equipment includes “hundreds of chassis, ISO tanks and high-cube containers,” the company says, “for use in the company’s services between the U.S., Puerto Rico, the Caribbean and Central America.”
- Crowley says it will add 6,000 total pieces of new equipment in 2015 to support its Florida-Puerto Rico trade out of Jacksonville.

# POTENTIAL OPPORTUNITIES

- TMT TERMINAL IMPROVEMENTS
- TMT GATE IMPROVEMENTS
- TMT BERTH 7 & 8 SHEETPILE REHAB
- NORTH JACKSONVILLE RAIL CORRIDOR
- BIMT BERTHS 30 – 34 WHARF REHABILITATION PROJECTS
- BIMT TERMINAL UPGRADES
- PARKING FACILITY
- AUTO PROCESSING FACILITY VIC DPMT
- BIMT GATE UPGRADES
- BARTRAM ISLAND BRIDGE
- DMMA ON NORTH BANK (w/ ROAD/RAIL ACCESS)
- O&M DREDGING CONTRACT



# CAPITAL PROJECTS

## BUDGET FY 2015-2016

### Jacksonville Port Authority

#### Capital Projects - Budget FY 2015-2016

LOCATION	GENERAL LEDGER PROJECT NUMBER	DESCRIPTION	FY BUDGETED AMOUNT	CONTRACT STATUS	STATE	FEDERAL	TENANT CONTRIBUTION	JPA OPERATING FUNDS	JPA FINANCING	JPA BONDS	CONSTRUCTION CONTRACTOR
Blount Island	B2013-08	Rehabilitate Wharf Structures (Berth 35)	\$ 30,000,000	IN PROGRESS	16,428,644				8,144,356	5,427,000	AMERICAN BRIDGE
	B2013-07	Design and Purchase of 3 EA. 100' Gauge Container Gantry Cranes & Parts	\$ 25,700,000	IN PROGRESS	15,000,000					10,700,000	ZPMC
	B2016-01	USMC Property (25 Acres)	\$ 2,500,000	ON-HOLD					2,500,000		TBD
	B2016-02	Tenant Parking Improvements	\$ 1,500,000	BIDS OPENED				1,500,000			TBD
	B2015-02	Top End Overhaul for the engines of Cranes 8811 and 8841 (Hanjungs)	\$ 180,000	PENDING				180,000			
	B2016-03	Tenant Asphalt Facility Rehabilitation	\$ 100,000	PENDING				100,000			
<b>Total Blount Island</b>			\$ 59,980,000		\$ 31,428,644	\$ -	\$ -	\$ 1,780,000	\$ 10,644,356	\$ 16,127,000	
Dames Point	D2012-06	ICTF	\$ 9,000,000	IN PROGRESS	5,940,000	3,060,000					DB KENYON
	D2016-01	Offsite Storm Water	\$ 4,500,000	PENDING			4,500,000				
	D2016-02	Wetland Mitigation	\$ 1,200,000	PENDING					1,200,000		
	D2016-03	August Drive Bridge Rehabilitation	\$ 250,000	IN DESIGN				250,000			
	D2014-05	Environmental Permitting	\$ 200,000	PENDING				200,000			
<b>Total Dames Point</b>			\$ 15,150,000		\$ 5,940,000	\$ 3,060,000	\$ 4,500,000	\$ 450,000	\$ 1,200,000	\$ -	
Talleyrand	T2016-01	Tenant Improvements	\$ 1,500,000	IN DESIGN				1,500,000			
	T2016-02	Warehouse 1 Demo	\$ 750,000	PENDING			750,000				
	T2016-03	Pile Inspection & Rehabilitation - Berths 4 & 5	\$ 750,000	PENDING				750,000			
	T2006-04	Pump & Treat System for Environmental Compliance	\$ 100,000	IN PROGRESS				100,000			AEROSTAR
	T2016-04	Asphalt Rehabilitation	\$ 100,000	PENDING				100,000			
<b>Total Talleyrand</b>			\$ 3,200,000		\$ -	\$ -	\$ 750,000	\$ 2,450,000	\$ -	\$ -	
Port Related	G2009-02	Jacksonville Harbor Deepening (Construction Phase)(USACE)	\$ 11,600,000	PED PHASE	11,600,000						
	G2012-01	Bartram Island Spoil Sites (Cell A & B2 Constr Phase) (USACE)	\$ 2,519,639	COMPLETED	2,519,639						HERVE CODY
	G2016-01	Capitalize In-House Engineering Services	\$ 400,000	N/A				400,000			
	G2016-02	TWIC Continuation (Round 15)	\$ 360,000	IN DESIGN		270,000		90,000			
	G2015-02	TWIC Continuation (Round 14)	\$ 325,000	IN DESIGN		243,750		81,250			
	G2002-01	Mile Point Navigation (Construction Phase) (USACE)	\$ 100,000	IN PROGRESS	100,000						MANSON CONSTR.
	G2016-03	Bartram Island Cell B Pump out Structure	\$ 83,750	PENDING				83,750			
<b>Total Miscellaneous</b>			\$ 15,388,389		\$ 14,219,639	\$ 513,750	\$ -	\$ 655,000	\$ -	\$ -	
Other Capital	003.2044.177	Rebuild Hanjung Gen Set	\$ 200,000	PENDING				200,000			
	003.2035.173	PCOB Generator	\$ 180,000	PENDING		135,000		45,000			
	003.2044.177	Trolley Motors (3 Hanjungs)	\$ 150,000	PENDING				150,000			
	003.2044.177	Trolley Sheaves (3 Hanjungs)	\$ 105,000	PENDING				105,000			
	003.2044.178	Head Block (Hanjung)	\$ 85,000	PENDING				85,000			
	003.2044.177	Elevator Safety Devices	\$ 50,000	PENDING				50,000			
	003.2044.177	Weight Load System - Paceco	\$ 50,000	PENDING				50,000			
	003.2044.177	Refurbish Electrical Room (3 Hanjungs)	\$ 30,000	PENDING				30,000			
	003.2042.193	(IT) Hardware/Software Upgrades	\$ 20,000	PENDING				20,000			
	003.2046.172	2 Wheeler Utility Vehicles (Used)	\$ 20,000	PENDING				20,000			
	003.2042.193	(IT) Network Overhaul	\$ 10,000	PENDING				10,000			
<b>Total Other Capital</b>			\$ 900,000		\$ -	\$ 135,000	\$ -	\$ 765,000	\$ -	\$ -	
<b>TOTAL CAPITAL PROJECTS</b>			\$ 94,618,389		\$ 51,588,283	\$ 3,708,750	\$ 5,250,000	\$ 6,100,000	\$ 11,844,356	\$ 16,127,000	

# BIMT CAPITAL PROJECTS

## BUDGET FY 2016-2020

### JACKSONVILLE PORT AUTHORITY - CAPITAL PROJECT SUMMARY

#### 5 YEAR CAPITAL PLAN

PROJECT NAME	Total 5 YR Plan Cost	CAPITAL COMMITMENTS				
		PROJECTED				
		2016	2017	2018	2019	2020
BLOUNT ISLAND MARINE TERMINAL PROJECTS						
Design and Purchase Three (3) 100 Gauge Container Cranes & Avtron Parts	25,700,000	25,700,000				
Design and Purchase Three (3) 100 Gauge Container Cranes for Berth 33 & 34	40,000,000				40,000,000	
Rehabilitate Wharf Structures (BERTH 35)	30,000,000	30,000,000				
Rehabilitate Wharf Structures (BERTH 33 & 34)	43,390,238		21,695,119	21,695,119		
Rehabilitate Wharf Structures (BERTH 32)	18,931,468					18,931,468
Rehabilitate Wharf Structures (BERTH 31)	10,383,750					10,383,750
Rehabilitate Wharf Structures (BERTH 30)	13,536,250				13,536,250	
Additional Rail Spurs (Amports Property & WWL)	4,000,000		1,000,000	3,000,000		
Tenant Parking Improvements (WWL)	1,500,000	1,500,000				
USMC Property (25 Acres Asphalt Project - WWL on BI Command Property)	2,500,000	2,500,000				
Design and Construction of New BI Main Gate Complex	5,000,000		2,500,000	2,500,000		
Paving for BI Container Storage - (all leased areas south of William Mills Acres) - SSL	54,000,000		18,000,000	18,000,000	18,000,000	
Replace Transit Shed #1	10,800,000			10,800,000		
Blount Island Shore Power Pits Electrical Panel - East End of Dock	2,000,000		1,000,000	1,000,000		
Paceco Upgrades	800,000		800,000			
Upgrade IHI Crane (Crane #2253)	450,000		450,000			
Tenant Yard Drainage Rehabilitation - APM	250,000		250,000			
Rehabilitate Tri-level Structure	50,000		50,000			
Improvements to FPL/JEA 10 Acre Property (Lease Area)	5,000,000		5,000,000			
Tenant Asphalt Facility Rehab (2016)	100,000	100,000				
Top End Overhaul for the engines of Cranes 8811 and 8841 (Hanjungs)	180,000	180,000				
Upgrade 3805 Trolley Rails @ Boom Break (Paceco)	175,000		175,000			
Fill In & Pavement of Pond 8 and other selected ponds	20,000,000					20,000,000
Amports Rack Unloading Pad - BI Blvd.	1,000,000				1,000,000	
Roof Replacement Access Control/Operations Building	50,000		50,000			
Replace Roof on Fire Station	40,000			40,000		
Asphalt Blount Island Bv., Intermodal Dr., William Mills St., TFL Rd., Container Way	660,000			660,000		
Replace Terminal Fencing (10,000 LF x \$35/4)	350,000			350,000		
Replace 12 High Mast Lights in Amports East Side of Blount Island Bv.	300,000			300,000		
Upgrade Offices and Building Roof Replacement (Amports & Processing Bldg)	2,800,000			2,800,000		
Upgrade Tenant Lease Area West of Transit Shed #1	2,400,000			2,400,000		
Two Acre Concrete Pad for Heavy-Tracked equipment at Berth-22	2,100,000			2,100,000		
Replace Transit Shed #3	1,100,000			1,100,000		
Rehabilitate Overhead Electric Utility at Southwestern portion of BI	1,000,000				1,000,000	
Install Concrete Track Equipment Receiving Yard on Blount Island Blvd	800,000				800,000	
Railroad Bridge Pile Jackets and Rehabilitation	750,000				750,000	
Rebuild 1/2 Acre Heavy Equipment Yard Berth-31	500,000				500,000	
Total BIMT	302,596,706	59,980,000	50,970,119	66,745,119	75,586,250	49,315,218



# DPMT/TMT/MISC CAPITAL PROJECTS

## BUDGET FY 2016-2020

### DAMES POINT MARINE TERMINAL PROJECTS

Intermodal Cargo Transfer Facility (ICTF)	9,000,000	9,000,000				
Environmental Permitting	200,000	200,000				
Wetland Mitigation	1,200,000	1,200,000				
Offsite Storm Water Mitigation	4,500,000	4,500,000				
August Drive Bridge Rehabilitation	250,000	250,000				
Large Fans in Cruise Terminal Baggage Area	50,000		50,000			
Cruise Terminal Building Alarm System	15,000		15,000			
SOC Connection to COJ Water & Sewer Lines on New Berlin Rd.	15,000			15,000		
Wynn's Creek Shoreline Stabilization	259,000			259,000		
Auto Processing Facility	65,801,371		35,801,371	30,000,000		
<b>Total DPMT</b>	<b>81,290,371</b>	<b>15,150,000</b>	<b>35,866,371</b>	<b>30,274,000</b>	<b>0</b>	<b>0</b>

### TALLEYRAND MARINE TERMINAL PROJECTS

Rehabilitate Steel Wharf Structures	14,000,000		7,000,000	7,000,000		
Asphalt Rehab	100,000	100,000				
Pump & Treat System for Environmental Compliance	100,000	100,000				
Tenant Improvement (Crowley)	1,500,000	1,500,000				
Rehabilitate Concrete Berth Structures	20,000,000			10,000,000	10,000,000	
Pile Inspection & Rehab Berths 4 & 5	750,000	750,000				
New Tenant Improvements	11,000,000		11,000,000			
Warehouse #1 Demo	750,000	750,000				
Pave 30 Acre Parcel for Tenant - (Toyota)	5,000,000		1,000,000	1,000,000	1,000,000	2,000,000
Tenant Transit Shed Roof - (Toyota)	250,000		250,000			
Leg Compressed Fender System - (Berths 4,5,6,7,8)	300,000		300,000			
Drive Upgrade - Hanjung	200,000		200,000			
PLC Upgrade - RTGs	150,000		150,000			
5,000 s.f. Facilities Department Storage Building	150,000		150,000			
Reefer Row Upgrade of Plug Replacements	75,000		75,000			
Talleyrand Terminal Entrance Sign	45,000		45,000			
<b>Total TMT</b>	<b>54,370,000</b>	<b>3,200,000</b>	<b>20,170,000</b>	<b>18,000,000</b>	<b>11,000,000</b>	<b>2,000,000</b>

### MISCELLANEOUS PROJECTS

Mile Point Navigation Project	100,000	100,000				
Harbor Deepening GRRII	720,400,000	11,600,000	165,700,000	130,700,000	130,700,000	281,700,000
Bartram Island Spoil Sites (Cell A & B2)	2,519,639	2,519,639				
Buck Island Bridge Renovation	50,000		50,000			
TWIC Continuation (Round 14) - Existing Grant	325,000	325,000				
PSGP (Round 15)	1,020,000	360,000	500,000	160,000		
Security Operations Center Air Conditioning Enhancement - Non Grant	35,000		35,000			
Bartram Island Cell B Pump-Out Structure	83,750	83,750				
Billing System Upgrade	250,000		250,000			
Capitalize In-House Engineering Services	2,000,000	400,000	400,000	400,000	400,000	400,000
Cruise Ship Terminal	32,500,000			2,500,000	30,000,000	
Land Acquisition	13,000,000			13,000,000		
Engineering Evaluation - Bartram Island Bridge	200,000		200,000			
Engineering Evaluation - Crowley Property (Site/Fill Assessment)	200,000		200,000			
Upland DMMA Purchase/Design/Construction/Offloading	70,000,000				70,000,000	
<b>Total MISC</b>	<b>842,683,389</b>	<b>15,388,389</b>	<b>167,335,000</b>	<b>146,760,000</b>	<b>231,100,000</b>	<b>282,100,000</b>

# OTHER CAPITAL PROJECTS

## BUDGET FY 2016-2020

### OTHER CAPITAL

Bromma STR45 Container Spreaders (2) Replacement (BI)	370,000			185,000	185,000	
Bromma Spreaders (TMT)	185,000		185,000			
Upgrade Hanjung Hoist Brakes (Assets 8810, 8811, 8841)	350,000			350,000		
Vehicle Replacements	273,000		93,000	60,000	60,000	60,000
Information Technology Hardware/Software Upgrades	2,020,000	20,000	500,000	500,000	500,000	500,000
Mail System Upgrades	100,000		100,000			
IT Network Overhaul	60,000	10,000	50,000			
Software License Compliance	60,000		60,000			
Website Upgrade	50,000		50,000			
PCOB Generator	180,000	180,000				
Elevator Safety Devices	120,000	50,000	20,000			50,000
Weight Load System - Paceco	50,000	50,000				
Trolley Sheaves (3 Hanjungs)	105,000	105,000				
Refurbish Electrical Room (3 Hanjungs)	30,000	30,000				
Trolley Motors (3 Hanjungs)	150,000	150,000				
Rebuild Hanjung Gen Set	200,000	200,000				
Head Block - Hanjung	85,000	85,000				
4 Wheeler Utility Vehicles (Used)	20,000	20,000				
Two - 10K Forklift (TMT)	55,000		55,000			
Replace Obsolete Gearbox (2209 & 2253) IHI	190,000		190,000			
Motorized Street Sweeper Replacement	183,000		183,000			
Transformer (BI)	150,000		150,000			
Front End Loader/Backhoe (TMT)	120,000		120,000			
IHI Gantry Wheel Flanges / Possible parts from BI scrap	100,000		100,000			
12CY Dump Truck (TMT)	60,000		60,000			
Replace Fifteen Dock Levelers at Container Freight Station	30,000		30,000			
Purchase Hybrid Vehicle (Planning/Properties)	30,000		30,000			
Purchase Minivan to Replace Asset #8567 (TMT)	30,000		30,000			
Lighting Replacement in Warehouse #1	15,000		15,000			
Lighting Upgrade, Maintenance Building	12,000		12,000			
(3) Lawn Mowers	30,000		30,000			
Road Sweeper	235,000		235,000			
Equipment/Vehicle Life (Mechanic Shop)	85,000		85,000			
Hanjung Drive Upgrade (8810)	250,000		250,000			
Weight Load Systems (8810, 8811, 8841)	350,000		350,000			
Spreader	185,000		185,000			
Paceco - Festoon Upgrade	350,000		350,000			
Hanjung 8810 - Elevator Upgrade	180,000			180,000		
Hanjung Drive Upgrade (8811)	250,000			250,000		
Festoon Upgrade (8810)	350,000			350,000		
Spreader	185,000			185,000		
Machine House Replacement (3805)	500,000			500,000		
Hanjung (8841) Elevator Upgrade	180,000				180,000	
Festoon Upgrade (8841)	350,000				350,000	
Spreader	185,000				185,000	
Drive Upgrade	250,000				250,000	
(5) Elevator Safety Devices	50,000				50,000	
Elevator Safety Devices	40,000					40,000
<b>Total Other (Small) Capital Projects</b>	<b>9,388,000</b>	<b>900,000</b>	<b>3,518,000</b>	<b>2,560,000</b>	<b>1,760,000</b>	<b>650,000</b>



# GRAND TOTALS CAPITAL PROJECTS

## BUDGET FY 2016-2020

<b>GRAND TOTAL</b>	<b>1,290,328,466</b>	<b>94,618,389</b>	<b>277,859,490</b>	<b>264,339,119</b>	<b>319,446,250</b>	<b>334,065,218</b>
<b>Funding Sources</b>	<b>5 YEAR TOTAL</b>	<b>FY 2016</b>	<b>FY 2017</b>	<b>FY 2018</b>	<b>FY 2019</b>	<b>FY 2020</b>
<b>JPA OPERATING FUNDS (PAYGO)</b>	<b>34,100,000</b>	<b>6,100,000</b>	<b>7,000,000</b>	<b>7,000,000</b>	<b>7,000,000</b>	<b>7,000,000</b>
<b>JPA FINANCING - LOC</b>	<b>11,844,356</b>	<b>11,844,356</b>	<b>0</b>	<b>0</b>	<b>0</b>	<b>0</b>
<b>JPA FINANCING - EXISTING JPA BONDS</b>	<b>16,127,000</b>	<b>16,127,000</b>	<b>0</b>	<b>0</b>	<b>0</b>	<b>0</b>
<b>JPA CRANE FINANCING</b>	<b>40,000,000</b>	<b>0</b>	<b>0</b>	<b>0</b>	<b>40,000,000</b>	<b>0</b>
<b>STATE (FSTED/BONDS)</b>	<b>63,588,283</b>	<b>51,588,283</b>	<b>3,000,000</b>	<b>3,000,000</b>	<b>3,000,000</b>	<b>3,000,000</b>
<b>FEDERAL</b>	<b>3,708,750</b>	<b>3,708,750</b>	<b>0</b>	<b>0</b>	<b>0</b>	<b>0</b>
<b>TO BE DETERMINED</b>	<b>1,120,960,077</b>	<b>5,250,000</b>	<b>267,859,490</b>	<b>254,339,119</b>	<b>269,446,250</b>	<b>324,065,218</b>
<b>GRAND TOTAL FUNDING SOURCES</b>	<b>1,290,328,466</b>	<b>94,618,389</b>	<b>277,859,490</b>	<b>264,339,119</b>	<b>319,446,250</b>	<b>334,065,218</b>

# ANY QUESTIONS?



# THANK YOU FOR LISTENING!!

## JOE R. MILLER

*Senior Director, Facilities Development  
Engineering and Construction Department*

---

*Jacksonville Port Authority  
2831 Talleyrand Avenue  
Jacksonville, Florida 33206  
P: 904.357.3001 E: [joe.miller@jaxport.com](mailto:joe.miller@jaxport.com)*

